

Wafer Style Butterfly Valve Type 565



General

- **Size:** 2"–12"
- **Outer Body:** Polyamide PA6-60
- **Material:** Disc (core/wetted): Polyamide PA6-60/PVDF
- **Seals:** EPDM, FKM
- **Stem:** 316 stainless steel
- **Operation:** Bare shaft, lever, gear
- **Connection:** Both ANSI 150 and DIN 2501
- **Actuator Interface:** EN ISO 5211

Key Certifications

- ISO 9393-2
- EN 12266 (leak rate A)
- ISO 5208 (Rate A)
- FDA x 21 177.2600: EPDM and FKM
- USP Class VI (physiological non-toxic): EPDM and FKM

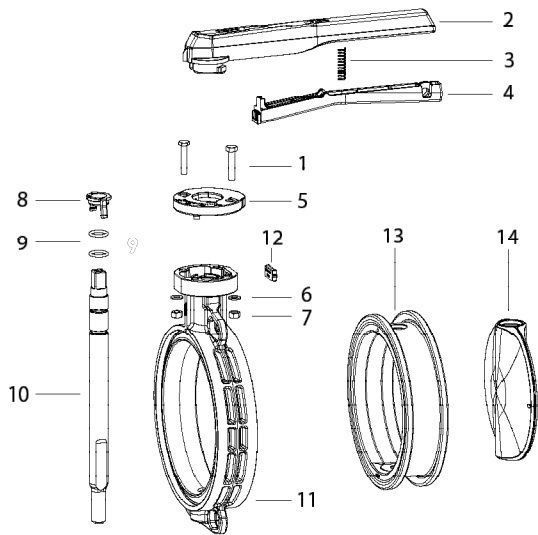
Sample Specification

The Type 565 Butterfly Valve is wafer style compatible with both ANSI 16.5 150lb and DIN 2501 flange patterns. The disc operation utilizes centric, resilient seated design principles. The valve is rated for bidirectional use. The stem is non-wetted, utilizing an interference fit of a molded seat and the disc hub. The seal liner fully isolates the valve body from process fluid. The handle is lockable with standard adjustment increments of 5 degrees. All valves are tested in accordance to ISO9393 and designed to ISO9001 for Quality and ISO14001 for Environmental Management. The operator mounting flange is compliant with ISO standards. Following assembly, every valve is tested and certified bubble tight exceeding Class VI standards.

Material Specification

PVDF valves shall be type 1, grade 2 according to ASTM D3222 standards. Valves of all materials shall be RoHS compliant.

Components



Optional Features

- Actuation: Electric, pneumatic
- Limit Switches: Mechanical, inductive
- Handle: Fine adjustment lever (1°)
- Operation: Chain operator, square operating nut
- Hardware: Alternatives available upon request

Valve Components

Part	Description	Material
1	Screw	304 Stainless Steel
2	Lever	Durethan®
3	Spring	Spring Steel coated with MOLYKOTE 3400A
4	Grid lever	Durethan®
5	Index plate	Durethan®
6	Washer	304 Stainless Steel
7	Nut	301 Stainless Steel
8	Shaft lock	Durethan®
9	O-ring	EPDM or FKM
10	Shaft	430F Stainless Steel
11	Housing	Durethan®
12	Cap	EPDM
13	Seat liner	EPDM or FKM
14	Disc (core)	Durethan®
14	Disc (wetted)	PVDF

Key Design Features

Reinforced Disc

The Type 565 Butterfly Valve is designed with a reinforced PVDF disc for improved strength. This rugged design is impact resistant, but does not compromise easy operation. The wetted PVDF disc material features superior surface finish and lubricity, while its Durethan® reinforcement provides lightweight toughness.



Double Redundant Seals

The Type 565 Butterfly Valve features a truly non-wetted shaft design. The shaft is isolated from the flow media by utilizing a disc-hub seal and double redundant o-rings. This industry tested design ensures a reliable seal for a variety of applications.

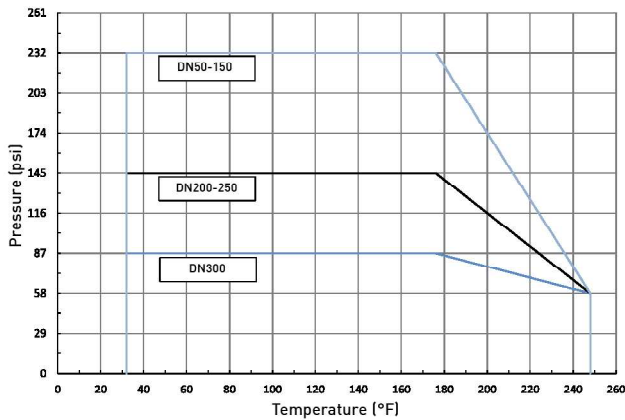
Inductive Double Switches

The Type 565 Butterfly Valve is offered with inductive switches that signal the CLOSED or OPEN position of the valve via an electric signal to a controller supplied by the customer. This feedback system can be added with the valve in-line and a new switch swapped without removing the operator.



Technical Data

Pressure-Temperature Curve



CV Value

Size (inch)	d (mm)	CV (gal/min)
2	63	101
2½	75	177
3	90	281
4	110	400
5	140	832
6	160	1262
8	225	3052
10	280	4357
12	315	6606

Operating torques

Size (inch)	d (mm)	Operating Torque (ft-lb) @ maximum pressure rating
2	63	11.1
2½	75	14.8
3	90	18.4
4	110	29.5
5	140	36.9
6	160	44.3
8	225	118.0
10	280	184.4
12	315	221.3

Weight

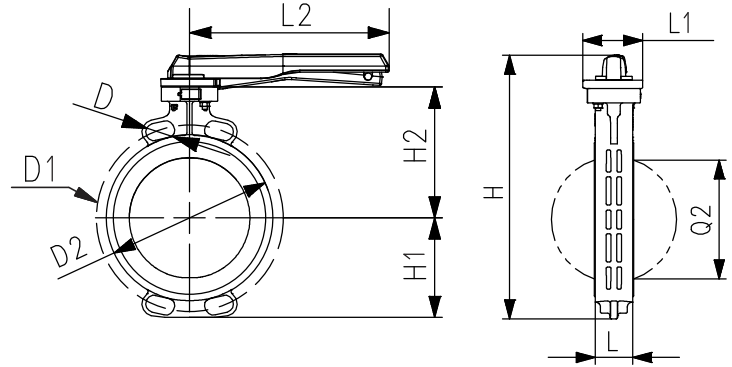
Size (inch)	d (mm)	Lever: EPDM	Lever: FKM	Gear: EPDM	Gear: FKM
2	63	2.7	2.9	6.1	6.3
2½	75	3.1	3.3	6.5	6.8
3	90	3.5	3.5	7.0	7.2
4	110	5.1	5.5	8.6	8.8
5	140	6.3	6.8	9.6	10.2
6	160	8.2	8.8	11.3	11.9
8	225	10.8	11.7	13.7	14.7
10	280	-	-	26.0	17.4
12	315	-	-	33.8	36.0

Dimensions

The following tables are shown in millimeters unless otherwise specified

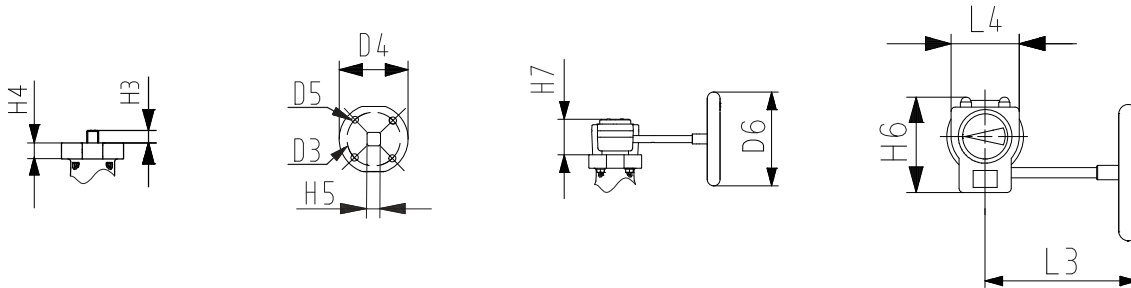
Bare Shaft

Size (inch)	D3	D4	D4	H3	H4	H5
2	70	90	8	27	27	11
2½	70	90	8	27	27	11
3	70	90	8	27	27	11
4	70	90	8	16	16	14
5	70	90	8	16	16	14
6	70	90	8	19	19	17
8	70	90	8	19	19	17
10	102	125	10	41	41	22
12	102	125	10	41	41	22



Lever

Size (inch)	d (mm)	D	D1 min	D1 max	D2	H	H1	H2	L	L1	L2	Q2
2	63	19	120	125	100	223	63	134	43	86	205	29
2½	75	19	140	145	121	249	82	140	46	86	205	44
3	90	19	150	160	138	261	89	146	46	86	205	64
4	110	19	175	191	159	286	104	167	52	86	255	84
5	140	23	210	216	187	314	118	180	56	86	255	111
6	160	24	241	241	213	338	17	189	56	86	320	138
8	225	23	290	295	267	387	17	210	60	86	323	192
10	280	25	353	362	326	499	22	263	68	126	-	239
12	315	25	400	432	380	555	22	285	78	126	-	286



Gear: G-CI (Standard)

Size (inch)	d (mm)	D6	H6	H7	L3	L4
2	63	152	115	58	180	92
2½	75	152	115	58	180	92
3	90	152	115	58	180	92
4	110	152	115	58	180	92
5	140	152	115	58	180	92
6	160	152	115	58	180	92
8	225	152	115	58	180	92
10	280	254	151	64	230	118
12	315	254	151	64	230	118

Gear: G-AL (Optional)

Size (inch)	d (mm)	D6	H6	H7	L3	L4
2	63	160	113	62	168	80
2½	75	160	113	62	168	80
3	90	160	113	62	168	80
4	110	160	113	62	168	80
5	140	160	113	62	168	80
6	160	160	113	62	168	80
8	225	160	113	62	168	80
10	280	200	130	69	186	100
12	315	200	130	69	186	100