

GF Piping Systems

+GF+

# Embrace the cold

COOL-FIT 2.0



# Confident insulation

**Efficient cooling processes are characterized by reliable installations and no maintenance times, zero system interruptions, and no energy loss. Choosing the right piping system can have a significant impact on these factors.**

Cooling systems for industrial cooling, process cooling, and air conditioning consume large amounts of energy to maintain a constant system temperature. Selecting the appropriate piping system to support the cooling circuit is of utmost importance for operators who aim for an efficient and reliable cooling process. What should you consider in particular?

The two most important factors are the material and the insulation. With conventional metal installations, the risk of condensation and subsequent corrosion is exceptionally high. This risk also occurs to systems that have been post-insulated. The insulation material can be damaged during installation. Small gaps between the piping system and the insulation layer can occur and allow ice formation due to condensation and subsequent corrosion. In addition, post-insulation requires an extra work step.



**Non-corrosive materials and vapor sealed insulation are of utmost importance for reliable and efficient piping systems in cooling applications.**



# Extreme reliability

The condensation and corrosion-free piping system for operations with no interruptions, zero maintenance, and highest efficiency.



## System integrity

The complete product portfolio consists of pre-insulated pipes, fittings, valves, flexible hoses, and all tools necessary for a safe and reliable installation.



## Efficient

High grade pre-insulation enhances energy efficiency (by 30%) with huge impact on costs and the planet's energy consumption.



## Reliable and safe

Maintenance-free operation for safe production with plastic construction providing a 25-year minimum lifespan.



#### **Corrosion-free**

100% corrosion-free and longer lasting than metal alternatives. No incrustation for reliable long-term efficient operation, ensures safe and reliable precision cooling.



#### **Fast and easy**

Simple jointing with electrofusion and system-specific tools.



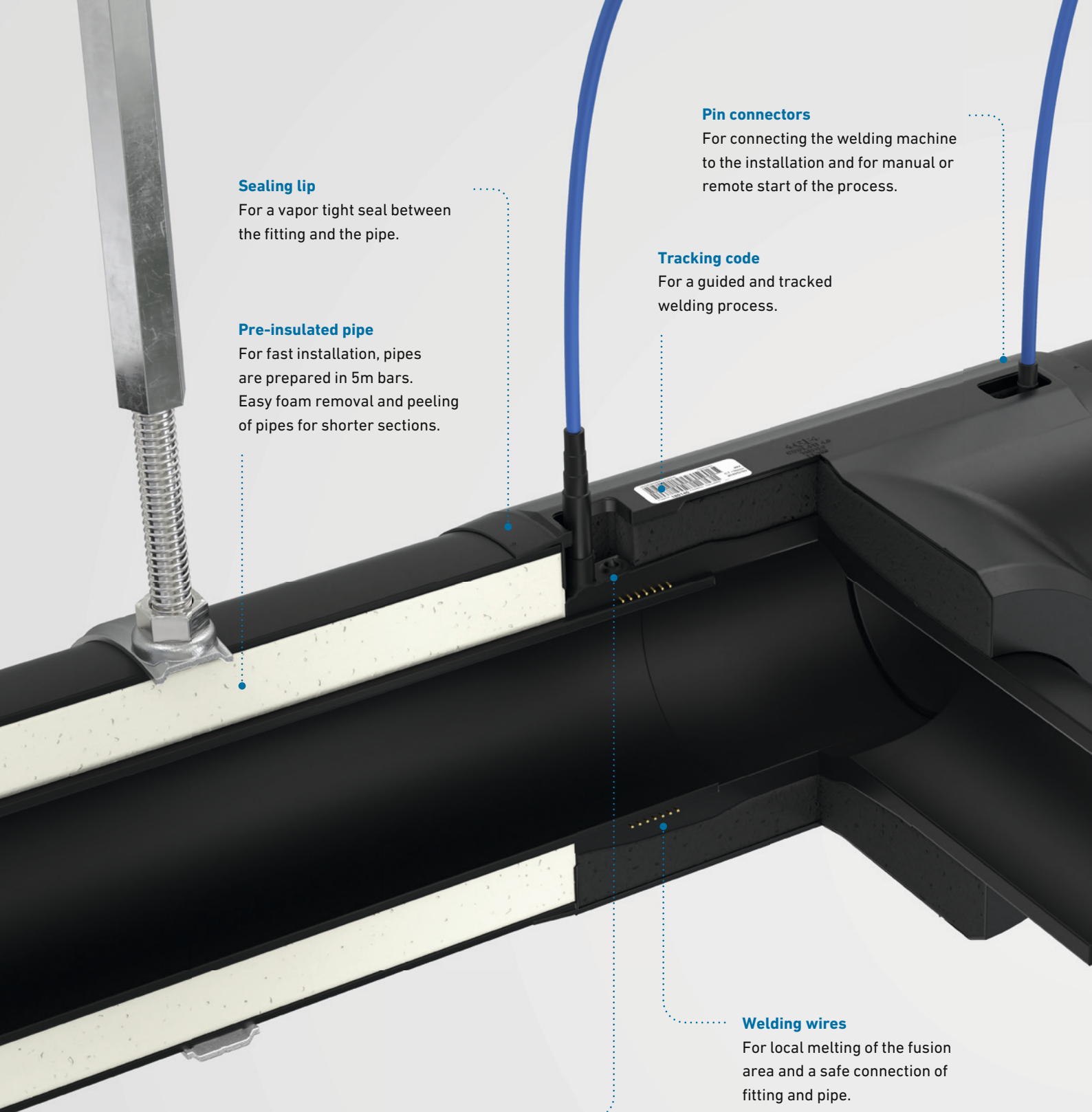
#### **Lightweight**

60% less weight than steel pipes per meter, allowing single-person installs.



#### **Industry specific**

Small and large diameters specifically focused on indoor and outdoor applications.



**Sealing lip**

For a vapor tight seal between the fitting and the pipe.

**Pre-insulated pipe**

For fast installation, pipes are prepared in 5m bars. Easy foam removal and peeling of pipes for shorter sections.

**Pin connectors**

For connecting the welding machine to the installation and for manual or remote start of the process.

**Tracking code**

For a guided and tracked welding process.

**Welding wires**

For local melting of the fusion area and a safe connection of fitting and pipe.

**Welding indicator**

For indication of a successful weld and haptic inspection after the welding process.

Learn how to make the perfect weld in the COOL-FIT video tutorial.

[gfps.com/cool-fit](https://gfps.com/cool-fit)



#### Pre-insulated fitting

For fast and easy installation thanks to pre-insulation. No manual post-insulation required.

#### Fixation

For securing against dislocation during installation with appropriate clamping tool.

## Electrofusion

# Confident installation

**One of the most significant benefits of COOL-FIT is the safe, simple, and fast installation by electrofusion. This jointing technology allows jointing within seconds.**

In electrofusion, wires built into the fitting are locally heated through electric current, which causes the melting and fusion of the surrounding material. This jointing technology ensures a secure and reliable connection. In combination

with a pre-insulated fitting with sealing lip, continuous insulation is also guaranteed. Once the components are assembled and secured against dislocation, the installation can be connected to the electrofusion unit. From there, the unit takes over and gives step-by-step instructions on the process. The fusion itself only takes seconds, and the welding indicator indicates its success. All welding data is stored on the welding device and is available for documenting the project.

# Extreme efficiency

**COOL-FIT leads the way when it comes to energy-efficient cooling and helps you to work in a more environmentally friendly and energy-efficient manner.**

The number of air conditioners in Europe will double by 2030, which leaves our industries with the challenge of rising energy demand. As a company that is active worldwide, it is GF Piping Systems' mission to show our commitment to sustainability by supporting our customers' success with innovative, energy-saving solutions making the collective global footprint more sustainable.

## **COOL-FIT environmental benefits**

- Saves at least 30% of energy compared to traditional cooling systems, drastically reducing operating costs and CO<sub>2</sub> emissions.
- Non-corrosive, with at least 25-year lifetime leading to additionally saved resources related to maintenance, repairs and replacements.
- Helps achieve relevant green building declarations like DGNB, BREEAM, and LEED.
- Free of HBCD, halogens and halogenated blowing agents. It contains no chlorinated paraffins and neither lead nor tin.
- Contains no other substance of very high concern according to the REACH criteria of the European Chemicals Agency or any candidate substance.
- Strict quality management (ISO 9001) and health and safety management (OHSAS 18001) during production. GF Piping Systems is certified according to ISO 14001 for its environmental management system.

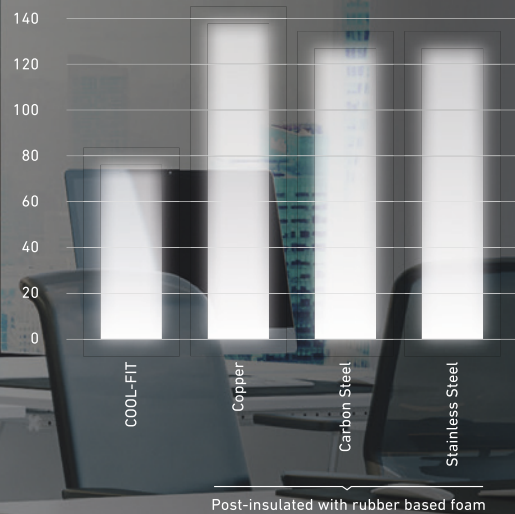


## COOL-FIT for the environment

**COOL-FIT helps to reduce the environmental impact of your cooling- and refrigeration application.**

Compared to post-insulated metal systems, COOL-FIT is considerably more environmentally friendly and helps for operations to be more energy-efficient. For example: a cold store uses 1500 meters of piping to transport liquid for the cooling system. COOL-FIT releases about 100 tons carbon dioxide less than a metal system during production and operation. This saving is equivalent to a journey of 446'000 kilometers by car.

[kW]



# 30%

energy savings compared to traditional cooling systems, drastically reducing operating costs and CO<sub>2</sub> emissions.

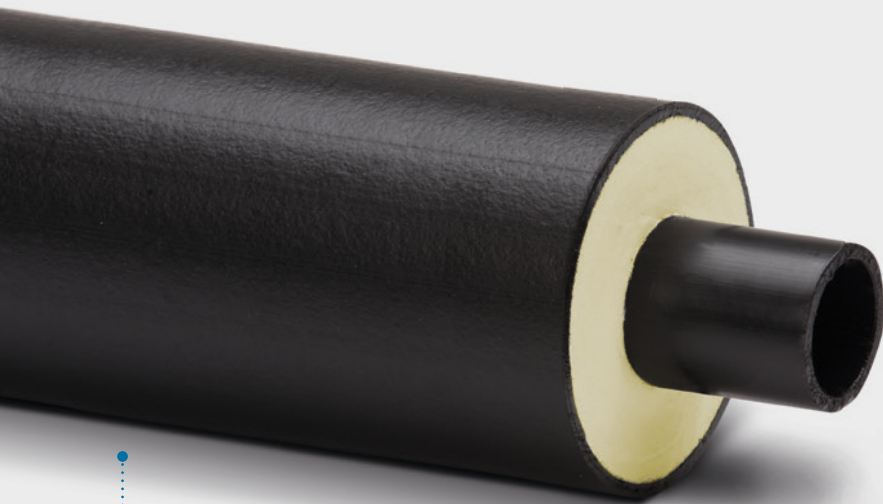
# Complete system integrity

With COOL-FIT, GF Piping Systems offers a unique, top-notch piping system solution, including pre-insulated pipes, fittings, valves, flexible hoses, and tools. The system is available in a standard version or with a higher fire classification (COOL-FIT 2.0F), to withstand even harsher conditions.



## Pre-insulated valves

GF Piping Systems' pre-insulated valves are an integral part of the COOL-FIT system and ensure an efficient cooling process. Pre-insulated valves ensure that the entire piping system is thoroughly insulated and perfectly sealed.



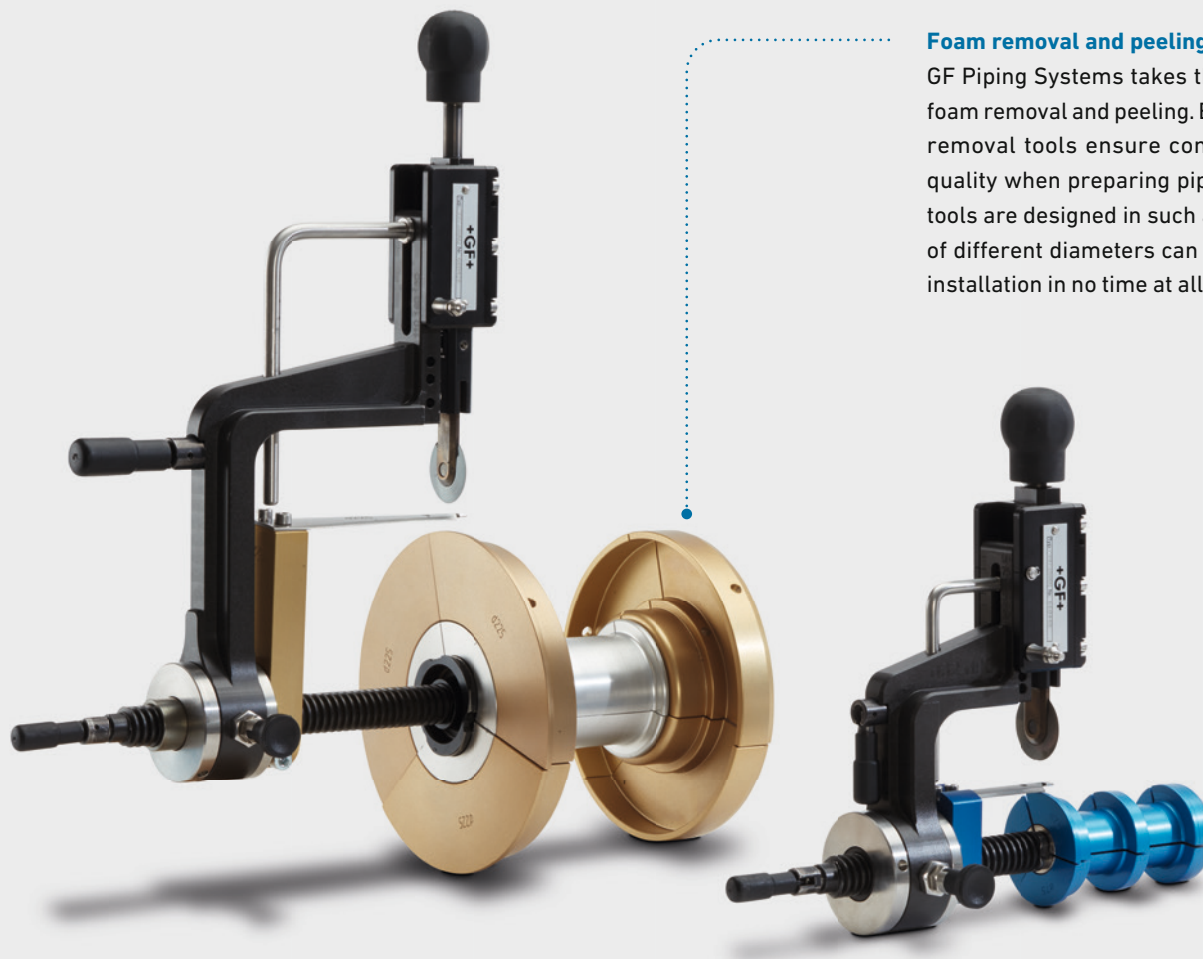
## Pre-insulated pipes

Easy to join and install, lightweight pre-insulated pipes help to minimize energy loss and reduce long-term running costs. Insulated with high-energy efficient foam, they are ideal for both new construction and retrofitting.



## Pre-insulated fittings

When creating branch lines, pre-insulated tee fittings make installation much easier. The fittings cover multiple dimension possibilities including various reductions.



### Foam removal and peeling tools

GF Piping Systems takes the hassle out of foam removal and peeling. Easy to use foam removal tools ensure consistent peeling quality when preparing pipe surfaces. The tools are designed in such a way that pipes of different diameters can be prepared for installation in no time at all.

## System properties

		COOL-FIT 2.0	COOL-FIT 2.0F
<b>Materials *</b>	Medium pipe	PE100	PE100
	Insulation	GF HE foam, halogen-free, closed-cell	GF HE foam, halogen-free, closed-cell
	Outer jacket	Pipe: HDPE, Fitting: GF-HE	Flame retardant – GF-FR
<b>Dimensions</b>		d32 mm (DN25) – d140 mm (DN125)	d32 mm (DN25) – d140 mm (DN125)
<b>Connection technology</b>		Electrofusion	Electrofusion
<b>Nominal pressure</b>		16 bar, SDR 11	16 bar, SDR 11
<b>Insulation</b>	Thermal conductivity $\lambda$ at 20°C	$\leq 0.022$ W/mK	$\leq 0.022$ W/mK
	Density	$\geq 70$ kg/m <sup>3</sup>	$\geq 70$ kg/m <sup>3</sup>
	Foam cell size	max. $\varnothing$ 0.5 mm	max. $\varnothing$ 0.5 mm
	Nominal thickness	22 mm	22 mm
<b>Temperature</b>	Medium	0 °C to +60 °C	0 °C to +60 °C
<b>Weight (without medium)</b>	Pipe d32 mm	1.12 kg/m	1.06 kg/m
	Pipe d110 mm	5.5 kg/m	5.39 kg/m
<b>Environment</b>	Resistance	Moisture- and vapor-tight	Moisture- and vapor-tight
	Ozone Depletion Potential (ODP)	Zero	Zero
<b>Standards</b>	EN ISO 15494	Plastic piping systems for industrial applications – Metric series	Plastic piping systems for industrial applications – Metric series
	ISO 7	Threaded joints	Threaded joints
	EN ISO 16135, EN ISO 16138	Industrial valves	Industrial valves
<b>Fire classification</b>	EN 13501-1	E	B-s2, d0

\* All three materials are firmly bonded together.

Applications

# Air conditioning and cooling applications

COOL-FIT 2.0 optimizes any air conditioning, process cooling and industrial air conditioning installation.



### Air Conditioning

Uninterrupted cooling processes and air conditioning ensure an ambient and comfortable environment at workplaces, residential buildings and hospitals.



### Cruise Ships

Corrosion-free air conditioning plays a vital role in onboard accommodation as it helps to have a healthy and pleasant atmosphere concerning temperature and humidity.



### Process Cooling

Production processes require stable temperatures for machinery. Reliable and maintenance-free cooling systems help to make production more efficient.



### Industrial air conditioning

An ambient work environment for the employees and stable temperatures for machinery help to sustain uninterrupted and efficient production processes.

# One partner from planning to commissioning

With Specialized Solutions, GF Piping Systems supports the design and installation of state of the art plastic piping systems, so that owners and planners can concentrate on their daily business without interruption. GF Piping Systems is present every step of the way, from providing planning support on new projects to testing the condition of old systems.

More information at  
[gfps.com/specialized-solutions](https://gfps.com/specialized-solutions)



## Custom Product Design and Prefabrication

Having your individual needs and application in focus, our customizing teams forge the solution that fits you best, developing custom-made parts to complete systems or special solutions produced in small series, individual consulting and off-site prefabrication. Through our global network of flexible locations, we offer a wide range of comprehensive solutions. Tailored innovation, inspired by you.



## Digital Libraries

The libraries cover three key areas for designing, creating, and maintaining a project: Building Information Modeling, the Plant Design Software, and the CAD Library helping you reduce costs and construction times while ensuring design accuracy and integrity. Reduce time and effort while ensuring design accuracy and integrity.





## Engineering

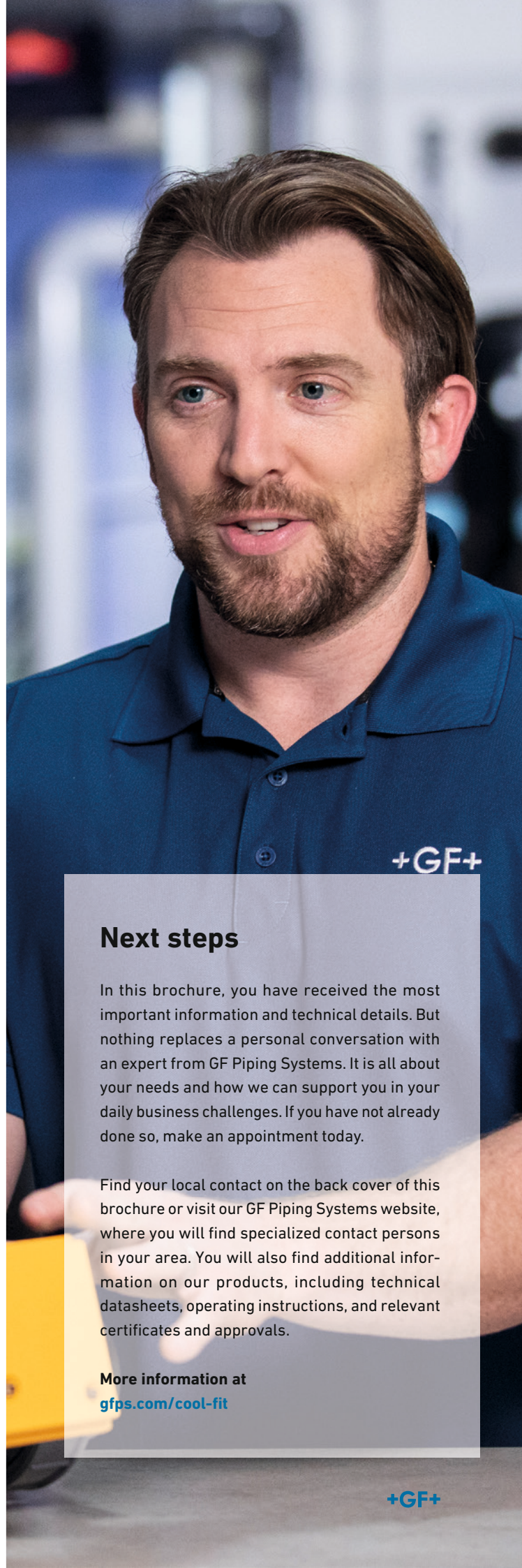
Increase the efficiency of your project with tailor-made analysis packages from GF Piping Systems. Minimize project risks by diminishing incorrect calculations or wrong material selection. Rely on GF's experience in fast project implementation and choose our durable, safe, and reliable piping systems delivery. Established knowledge, guiding you through.



## Cooling Tool-Box

The cooling calculation tool from GF Piping Systems supports the dimensioning and design of the secondary circuit. The cooling calculation tool includes calculation functions for expansion/ contraction, energy saving, surface temperatures, pipe dimensioning, pressure losses, CO2 footprint, and many more.

Use the online calculator  
[gfps.com/cooling-tools](https://gfps.com/cooling-tools)



## Next steps

In this brochure, you have received the most important information and technical details. But nothing replaces a personal conversation with an expert from GF Piping Systems. It is all about your needs and how we can support you in your daily business challenges. If you have not already done so, make an appointment today.

Find your local contact on the back cover of this brochure or visit our GF Piping Systems website, where you will find specialized contact persons in your area. You will also find additional information on our products, including technical datasheets, operating instructions, and relevant certificates and approvals.

More information at  
[gfps.com/cool-fit](https://gfps.com/cool-fit)

Product range

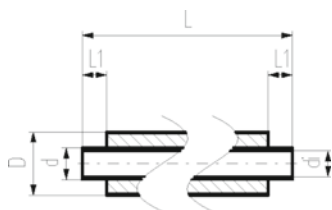
# COOL-FIT 2.0





# COOL-FIT 2.0

## COOL-FIT 2.0 Pipes



### COOL-FIT 2.0 Pipe

#### Model:

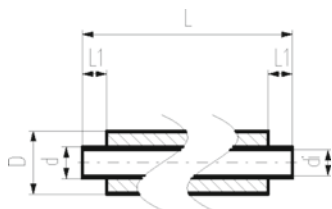
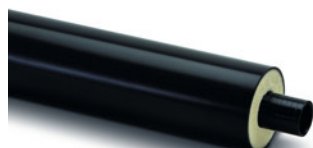
- Pre-insulated PE100 SDR11, metric
- Insulation made from GF HE foam
- Impact resistant. Color: black
- With free ends for electrofusion

#### Note:

bigger dimensions available via COOL-FIT 4.0 product range

d (mm)	d/D (mm)	DN (mm)	SDR	PN (bar)	Code	Weight (kg/m)	di (mm)	L (mm)	L1 (mm)	closest inch (inch)
32	32/75	25	11	16	<b>738 174 108</b>	1.140	26.2	5000	36	1
40	40/90	32	11	16	<b>738 174 109</b>	1.534	32.6	5000	40	1 ¼
50	50/90	40	11	16	<b>738 174 110</b>	1.722	40.8	5000	44	1 ½
63	63/110	50	11	16	<b>738 174 111</b>	2.711	51.4	5000	48	2
75	75/125	65	11	16	<b>738 174 112</b>	3.405	61.4	5000	55	2 ½
90	90/140	80	11	16	<b>738 174 113</b>	4.320	73.5	5000	62	3
110	110/160	100	11	16	<b>738 174 114</b>	5.692	90.0	5000	72	4
140	140/200	125	11	16	<b>738 174 116</b>	9.021	114.6	5000	84	5

### COOL-FIT 2.0F Pipe Fire retardant



#### Model:

- Pre-insulated PE100 SDR11, metric
- Insulation made from GF HE foam
- Fire retardant jacket. Color: black
- With free ends for electrofusion

#### Note:

Bigger dimensions available via COOL-FIT 4.0F product range

d (mm)	d/D (mm)	DN (mm)	SDR	PN (bar)	Code	Weight (kg/m)	di (mm)	L (mm)	L1 (mm)	closest inch (inch)
32	32/75	25	11	16	<b>738 174 308</b>	1.140	26.2	5000	36	1
40	40/90	32	11	16	<b>738 174 309</b>	1.534	32.6	5000	40	1 ¼
50	50/90	40	11	16	<b>738 174 310</b>	1.722	40.8	5000	44	1 ½
63	63/110	50	11	16	<b>738 174 311</b>	2.711	51.4	5000	48	2
75	75/125	65	11	16	<b>738 174 312</b>	3.405	61.4	5000	55	2 ½
90	90/140	80	11	16	<b>738 174 313</b>	4.320	73.6	5000	62	3
110	110/160	100	11	16	<b>738 174 314</b>	5.692	90.0	5000	72	4
140	140/200	125	11	16	<b>738 174 316</b>	9.021	114.6	5000	84	5

# COOL-FIT 2.0 Fittings



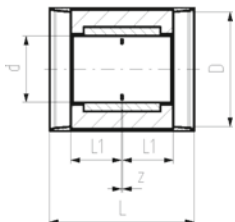
## COOL-FIT 2.0 Coupler

### Model:

- Pre-insulated PE100 SDR11, metric
- Insulation made from GF HE foam
- Impact resistant. Color: black
- Integrated sealing lip, for a moisture-proof and vapour tight sealing

### Note:

bigger dimensions available via COOL-FIT 4.0 product range



d (mm)	d/D (mm)	DN (mm)	SDR	PN (bar)	Code	Weight (kg)	L (mm)	L1 (mm)	z (mm)	closest inch (inch)
32	32/75	25	11	16	<b>738 914 108</b>	0.092	113	36	5	1
40	40/90	32	11	16	<b>738 914 109</b>	0.126	121	40	3	1 ¼
50	50/90	40	11	16	<b>738 914 110</b>	0.160	129	44	3	1 ½
63	63/110	50	11	16	<b>738 914 111</b>	0.237	137	48	3	2
75	75/125	65	11	16	<b>738 914 112</b>	0.339	152	55	3	2 ½
90	90/140	80	11	16	<b>738 914 113</b>	0.476	166	62	4	3
110	110/160	100	11	16	<b>738 914 114</b>	0.778	188	72	4	4
140	140/200	125	11	16	<b>738 914 116</b>	1.097	210	84	3	5



A



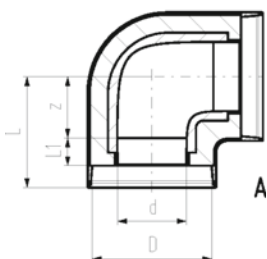
B

## COOL-FIT 2.0 Elbow 90°

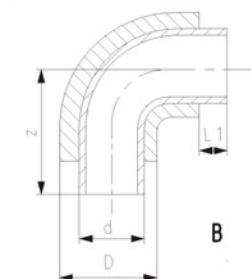
### Model:

- Pre-insulated PE100 SDR11, metric
- Insulation made from GF HE foam
- Impact resistant. Color: black
- A: Electrofusion Fitting with integrated sealing lip, for a moisture-proof and vapour tight sealing
- B: Spigot Fitting with free end (separate electrofusion fitting needed for joining)

d (mm)	d/D (mm)	DN (mm)	SDR	PN (bar)	Code	Weight (kg)	L (mm)	L1 (mm)	z (mm)	closest inch (inch)	Type
32	32/75	25	11	16	<b>738 104 108</b>	0.127	75	36	20	1	A
40	40/90	32	11	16	<b>738 104 109</b>	0.185	82	40	23	1 ¼	A
50	50/90	40	11	16	<b>738 104 110</b>	0.242	93	44	30	1 ½	A
63	63/110	50	11	16	<b>738 104 111</b>	0.384	101	48	34	2	A
75	75/125	65	11	16	<b>738 104 112</b>	0.510	114	55	40	2 ½	A
90	90/140	80	11	16	<b>738 104 113</b>	0.960	144	62	63	3	A
110	110/160	90	11	16	<b>738 104 114</b>	1.406	168	72	77	4	A
140	140/200	125	11	16	<b>738 104 116</b>	2.690		84	221	5	B



A



B

## COOL-FIT 2.0 Elbow 45°

### Model:

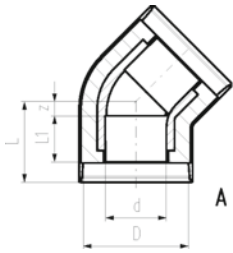
- Pre-insulated PE100 SDR11, metric
- Insulation made from GF HE foam
- Impact resistant. Color: black
- A: Electrofusion Fitting with integrated sealing lip, for a moisture-proof and vapour tight sealing
- B: Spigot Fitting with free end (separate electrofusion fitting needed for joining)



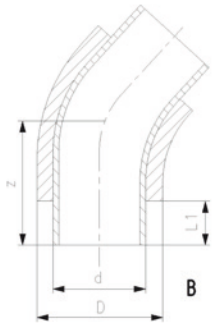
**A**



**B**



**A**



**B**

d (mm)	d/D (mm)	DN (mm)	SDR	PN (bar)	Code	Weight (kg)	L (mm)	L1 (mm)	z (mm)	closest inch (inch)	Type
32	32/75	25	11	16	<b>738 154 108</b>	0.101	66	36	11	1	A
40	40/90	32	11	16	<b>738 154 109</b>	0.143	70	40	11	1 ¼	A
50	50/90	40	11	16	<b>738 154 110</b>	0.206	76	44	13	1 ½	A
63	63/110	50	11	16	<b>738 154 111</b>	0.307	83	48	16	2	A
75	75/125	65	11	16	<b>738 154 112</b>	0.407	92	55	18	2 ½	A
90	90/140	80	11	16	<b>738 154 113</b>	0.686	111	62	30	3	A
110	110/160	90	11	16	<b>738 154 114</b>	1.123	132	72	41	4	A
140	140/200	125	11	16	<b>738 154 116</b>	1.967		84	164	5	B

## COOL-FIT 2.0 Tee 90° equal

### Model:

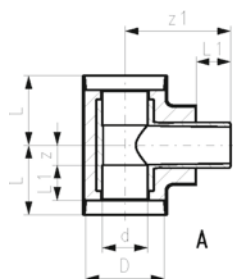
- Pre-insulated PE100 SDR11, metric
- Insulation made from GF HE foam
- Impact resistant. Color: black
- A: Electrofusion Fitting with integrated sealing lip, for a moisture-proof and vapour tight sealing
- B: Spigot Fitting with free end (separate electrofusion fitting needed for joining)



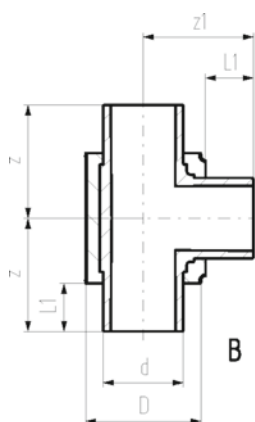
**A**



**B**



**A**



**B**

d (mm)	d/D (mm)	DN (mm)	SDR	PN (bar)	Code	Weight (kg)
32	32/75	25	11	16	<b>738 204 108</b>	0.154
40	40/90	32	11	16	<b>738 204 109</b>	0.230
50	50/90	40	11	16	<b>738 204 110</b>	0.306
63	63/110	50	11	16	<b>738 204 111</b>	0.492
75	75/125	65	11	16	<b>738 204 112</b>	0.673
90	90/140	80	11	16	<b>738 204 113</b>	1.022
110	110/160	100	11	16	<b>738 204 114</b>	1.751
140	140/200	125	11	16	<b>738 204 116</b>	3.317

d (mm)	d/D (mm)	L (mm)	L1 (mm)	z (mm)	z1 (mm)	closest inch (inch)	Type
32	32/75	73	36	18	98	1	A
40	40/90	81	40	22	112	1 ¼	A
50	50/90	88	44	25	125	1 ½	A
63	63/110	97	48	30	147	2	A
75	75/125	110	55	36	140	2 ½	A
90	90/140	124	62	43	161	3	A
110	110/160	148	72	57	184	4	A
140	140/200		84	198	193	5	B

## COOL-FIT 2.0 Tee 90° reduced

### Model:

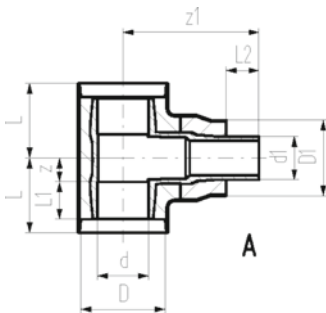
- Pre-insulated PE100 SDR11, metric
- Insulation made from GF HE foam
- Impact resistant. Color: black
- A: Electrofusion Fitting with integrated sealing lip, for a moisture-proof and vapour tight sealing. Branch with free pipe end.
- B: Spigot Fitting with free end (separate electrofusion fitting needed for joining)



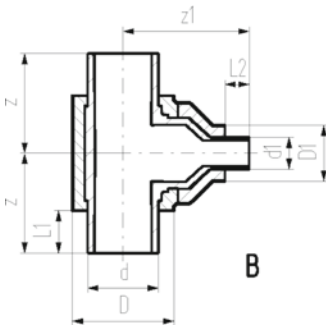
A



B



A



B

d (mm)	d/D (mm)	d1/D1 (mm)	DN	SDR	PN (bar)	Code	Weight (kg)
75	75/125	63/110	65	11	16	<b>738 204 218</b>	0.746
90	90/140	63/110	80	11	16	<b>738 204 222</b>	1.096
90	90/140	75/125	80	11	16	<b>738 204 223</b>	1.133
110	110/160	63/110	100	11	16	<b>738 204 227</b>	1.746
110	110/160	75/125	100	11	16	<b>738 204 228</b>	1.782
110	110/160	90/140	100	11	16	<b>738 204 229</b>	1.848
140	140/200	63/110	125	11	16	<b>738 204 340</b>	3.441
140	140/200	75/125	125	11	16	<b>738 204 341</b>	3.504
140	140/200	90/140	125	11	16	<b>738 204 342</b>	3.569
140	140/200	110/160	125	11	16	<b>738 204 343</b>	3.620

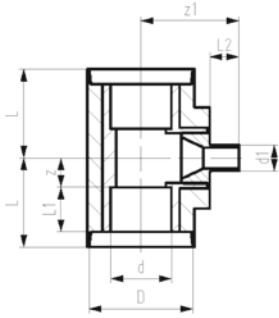
d (mm)	d/D (mm)	d1/D1 (mm)	L (mm)	L1 (mm)	L2 (mm)	z (mm)	z1 (mm)	Closest inch (inch)	Type
75	75/125	63/110	110	55	48	36	200	2 ½ - 2	A
90	90/140	63/110	124	62	48	42	227	3 - 2	A
90	90/140	75/125	124	62	55	42	227	3 - 2 ½	A
110	110/160	63/110	148	72	48	57	245	4 - 2	A
110	110/160	75/125	148	72	55	57	245	4 - 2 ½	A
110	110/160	90/140	148	72	62	57	245	4 - 3	A
140	140/200	63/110		84	48	198	250	5 - 2	B
140	140/200	75/125		84	55	198	262	5 - 2 ½	B
140	140/200	90/140		84	62	198	263	5 - 3	B
140	140/200	110/160		84	72	198	258	5 - 4	B



### COOL-FIT 2.0 Tee 90° reduced, short

**Model:**

- Pre-insulated PE100 SDR11, metric
- Insulation made from GF HE foam
- Impact resistant. Color: black
- A: Electrofusion Fitting with integrated sealing lip, for a water and vapour tight sealing
- Space-optimized branch: sealing lip of Fitting Typ A that joins to the branch, needs to be cut and adhesive ring be use



d (mm)	d/D (mm)	d1 (mm)	DN (mm)	SDR	PN (bar)	Code	Weight (kg)
40	40/90	32	32	11	16	<b>738 204 506</b>	0.250
50	50/90	32	40	11	16	<b>738 204 509</b>	0.340
63	63/110	32	50	11	16	<b>738 204 512</b>	0.550
75	75/125	32	65	11	16	<b>738 204 515</b>	0.750
90	90/140	32	80	11	16	<b>738 204 519</b>	1.150
110	110/160	32	100	11	16	<b>738 204 524</b>	2.000

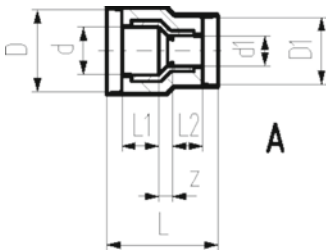
d (mm)	d/D (mm)	L (mm)	L1 (mm)	L2 (mm)	z (mm)	z1 (mm)	Closest inch (inch)	Type
40	40/90	81	40	36	22	108	1 ¼ - 1	A
50	50/90	88	44	36	25	117	1 ½ - 1	A
63	63/110	97	48	36	30	135	2 - 1	A
75	75/125	110	55	36	36	121	2 ½ - 1	A
90	90/140	124	62	36	43	135	3 - 1	A
110	110/160	148	72	36	57	148	4 - 1	A



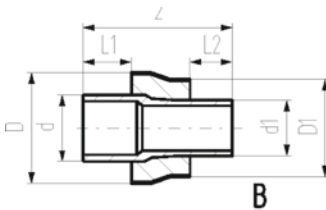
A



B



A



B

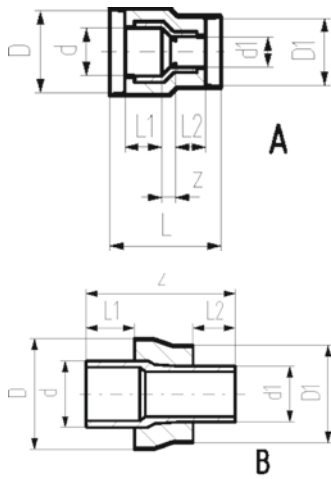
### COOL-FIT 2.0 Reducer

**Model:**

- Pre-insulated PE100 SDR11, metric
- Insulation made from GF HE foam
- Impact resistant. Color: black
- A: Electrofusion Fitting with integrated sealing lip, for a moisture-proof and vapour tight sealing
- B: Spigot Fitting with free end (separate electrofusion fitting needed for joining)

d (mm)	d/D (mm)	d1/D1 (mm)	DN (mm)	SDR	PN (bar)	Code	Weight (kg)
40	40/90	32/75	32	11	16	<b>738 904 206</b>	0.125
50	50/90	32/75	40	11	16	<b>738 904 209</b>	0.154
50	50/90	40/90	40	11	16	<b>738 904 210</b>	0.153
63	63/110	32/75	50	11	16	<b>738 904 212</b>	0.198
63	63/110	40/90	50	11	16	<b>738 904 213</b>	0.221
63	63/110	50/90	50	11	16	<b>738 904 214</b>	0.219
90	90/140	63/110	80	11	16	<b>738 904 222</b>	0.464
110	110/160	90/140	100	11	16	<b>738 904 229</b>	0.799
75	75/125	63/110	65	11	16	<b>738 904 318</b>	0.244
90	90/140	63/110	80	11	16	<b>738 904 322</b>	0.360
90	90/140	75/125	80	11	16	<b>738 904 323</b>	0.395
110	110/160	63/110	100	11	16	<b>738 904 327</b>	0.523
110	110/160	75/125	100	11	16	<b>738 904 328</b>	0.553
110	110/160	90/140	100	11	16	<b>738 904 329</b>	0.599
140	140/200	63/110	125	11	16	<b>738 904 340</b>	0.917
140	140/200	75/125	125	11	16	<b>738 904 341</b>	0.997
140	140/200	90/140	125	11	16	<b>738 904 342</b>	1.039
140	140/200	110/160	125	11	16	<b>738 904 343</b>	1.051

d (mm)	d/D (mm)	d1/D1 (mm)	L (mm)	L1 (mm)	L2 (mm)	z (mm)	Closest inch (inch)	Type
40	40/90	32/75	131	40	36	17	1 ¼ - 1	A
50	50/90	32/75	139	44	36	21	1 ½ - 1	A
50	50/90	40/90	137	44	40	15	1 ½ - 1 ¼	A



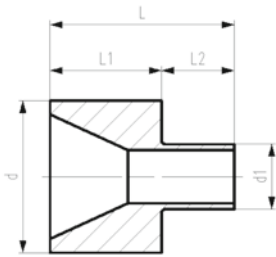
d (mm)	d/D	d1/D1 (mm)	L (mm)	L1 (mm)	L2 (mm)	z (mm)	Closest inch (inch)	Type
63	63/110	32/75	148	48	36	26	2 - 1	A
63	63/110	40/90	147	48	40	21	2 - 1 ¼	A
63	63/110	50/90	147	48	44	17	2 - 1 ½	A
90	90/140	63/110	187	62	48	39	3 - 2	A
110	110/160	90/140	214	72	62	42	4 - 3	A
75	75/125	63/110		55	48	170	2 ½ - 2	B
90	90/140	63/110		62	48	190	3 - 2	B
90	90/140	75/125		62	55	190	3 - 2 ½	B
110	110/160	63/110		72	48	205	4 - 2	B
110	110/160	75/125		72	55	205	4 - 2 ½	B
110	110/160	90/140		84	62	205	4 - 3	B
140	140/200	63/110		84	48	225	5 - 2	B
140	140/200	75/125		84	55	237	5 - 2 ½	B
140	140/200	90/140		84	62	238	5 - 3	B
140	140/200	110/160		84	72	233	5 - 4	B



### COOL-FIT 2.0 Reducer short

#### Model:

- Spigot fitting PE100 SDR11, metric with free end
- Space-optimized branch: sealing lip of Fitting Typ A that joins to the branch, needs to be cut and adhesive ring be use



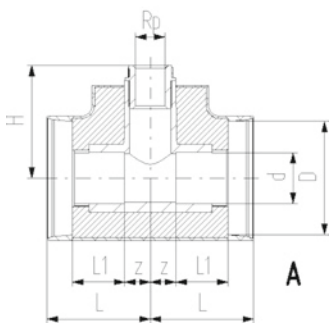
d (mm)	d1 (mm)	DN (mm)	SDR	PN (bar)	Code	Weight (kg)	L (mm)	L1 (mm)	L2 (mm)
40	32	32	11	16	<b>738 900 506</b>	0.030	76	40	36
50	32	40	11	16	<b>738 900 509</b>	0.060	80	44	36
50	40	40	11	16	<b>738 900 510</b>	0.060	84	44	40
63	32	50	11	16	<b>738 900 512</b>	0.100	84	48	36
63	40	50	11	16	<b>738 900 513</b>	0.100	88	48	40
63	50	50	11	16	<b>738 900 514</b>	0.100	92	48	44
75	32	65	11	16	<b>738 900 515</b>	0.170	91	55	36
90	32	80	11	16	<b>738 900 519</b>	0.280	98	62	36
110	32	100	11	16	<b>738 900 524</b>	0.500	108	72	36



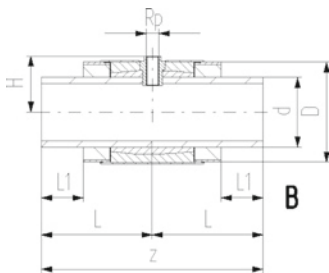
A



B



A



B

## COOL-FIT 2.0 Installation fitting type 313 Rp

### Model:

- Pre-insulated PE100 SDR11, metric
- Insulation made from GF HE foam
- Impact resistant. Color: black
- With threaded branch for sensors (i.e temperature, pressure)
- A: Electrofusion Fitting with integrated sealing lip, for a moisture-proof and vapour tight sealing
- B: Spigot Fitting with free end (separate electrofusion fitting needed for joining)

d (mm)	d/D (mm)	Thread Type	Size (inch)	DN (mm)	SDR	PN (bar)	Code	Weight (kg)
32	32/75	Rp	½	25	11	16	<b>738 313 408</b>	0.138
40	40/90	Rp	½	32	11	16	<b>738 313 409</b>	0.216
40	40/90	Rp	¾	32	11	16	<b>738 313 459</b>	0.216
50	50/90	Rp	½	40	11	16	<b>738 313 410</b>	0.308
50	50/90	Rp	¾	40	11	16	<b>738 313 460</b>	0.307
63	63/110	Rp	½	50	11	16	<b>738 313 411</b>	0.493
63	63/110	Rp	¾	50	11	16	<b>738 313 461</b>	0.492
75	75/125	Rp	½	65	11	16	<b>738 313 412</b>	0.678
75	75/125	Rp	¾	65	11	16	<b>738 313 462</b>	0.677
90	90/140	Rp	½	80	11	16	<b>738 313 413</b>	1.025
90	90/140	Rp	¾	80	11	16	<b>738 313 463</b>	1.023
110	110/160	Rp	½	100	11	16	<b>738 313 414</b>	1.765
110	110/160	Rp	¾	100	11	16	<b>738 313 464</b>	1.763
140	140/200	Rp	½	125	11	16	<b>738 313 416</b>	3.406
140	140/200	Rp	¾	125	11	16	<b>738 313 466</b>	3.401

d (mm)	L (mm)	L1 (mm)	z (mm)	H (mm)	Closest inch (inch)	Type
32	73	36	16	75	1	A
40	81	40	21	85	1 ¼	A
40	81	40	21	88	1 ¼	A
50	88	44	24	94	1 ½	A
50	88	44	24	97	1 ½	A
63	97	48	29	113	2	A
63	97	48	29	116	2	A
75	110	55	35	99	2 ½	A
75	110	55	35	102	2 ½	A
90	123	62	42	113	3	A
90	123	62	42	116	3	A
110	148	72	56	128	4	A
110	148	72	56	131	4	A
140	224	84	44	110	5	B
140	224	84	44	113	5	B



# COOL-FIT 2.0 Transition Fittings



A



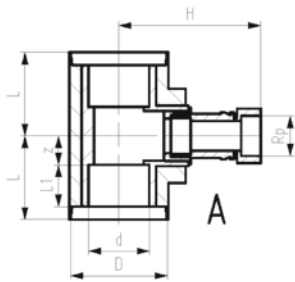
B

## COOL-FIT 2.0 Transition Tee90° PE/brass With female thread Rp

### Model:

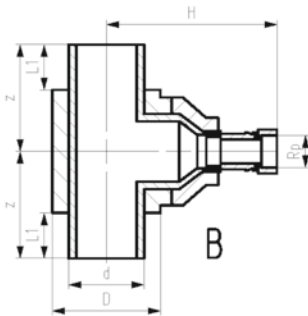
- Pre-insulated, PE100, SDR11, metric
- Brass CuZn40Pb2 with female thread Rp
- Insulation made from GF HE foam
- Impact resistant. Color: black
- A: Electrofusion Fitting with integrated sealing lip, for a water and vapour tight sealing
- B: Spigot Fitting with free end (separate electrofusion fitting needed for joining)

d (mm)	d/D (mm)	Thread Type	Size (inch)	DN (mm)	SDR	PN (bar)	Code	Weight (kg)
63	63/110	Rp	2	50	11	16	<b>738 954 061</b>	1.700
75	75/125	Rp	2	65	11	16	<b>738 954 062</b>	1.900
90	90/140	Rp	2	80	11	16	<b>738 954 063</b>	2.300
110	110/160	Rp	2	100	11	16	<b>738 954 064</b>	3.100
140	140/200	Rp	2	125	11	16	<b>738 954 066</b>	4.700



A

d (mm)	L (mm)	L1 (mm)	z (mm)	H (mm)	closest inch (inch)	Type
63	97	48	29	212	2	A
75	110	55	36	193	2 ½	A
90	124	62	43	210	3	A
110	148	72	57	223	4	A
140		84	447	316	5	B



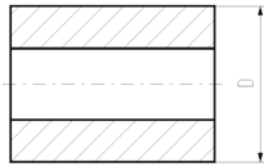
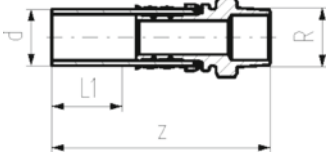
B



### COOL-FIT 2.0 Adaptor fitting PE/stainless steel With male thread R

#### Model:

- Spigot fitting PE100 SDR11, metric with free end
- Stainless steel 1.4404 / 316L with male thread R
- Gasket: O-ring EPDM
- Including Insulation made from NBR foam



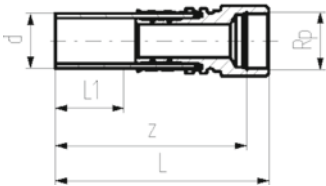
d (mm)	D (mm)	Thread Type	Size (inch)	DN (mm)	SDR	PN (bar)	Code	Weight (kg)	L1 (mm)	z (mm)
32	70	R	½	25	11	16	<b>738 944 508</b>	0.194	36	130
32	70	R	¾	25	11	16	<b>738 944 518</b>	0.202	36	134
32	70	R	1	25	11	16	<b>738 944 528</b>	0.211	36	134
40	78	R	1 ¼	32	11	16	<b>738 944 509</b>	0.595	40	156
50	88	R	1 ½	40	11	16	<b>738 944 510</b>	0.954	44	168
63	101	R	2	50	11	16	<b>738 944 511</b>	1.381	48	179



### COOL-FIT 2.0 Adaptor fitting PE/stainless steel With female thread Rp

#### Model:

- Spigot fitting PE100 SDR11, metric with free end
- Stainless steel 1.4404 / 316L with female thread Rp
- Gasket: O-ring EPDM
- Including Insulation made from NBR foam



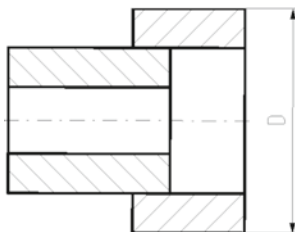
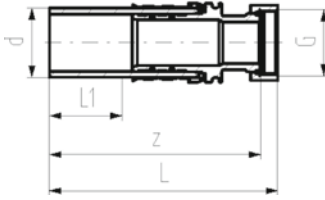
d (mm)	D (mm)	Thread Type	Size (inch)	DN (mm)	SDR	PN (bar)	Code	Weight (kg)	L (mm)	L1 (mm)	z (mm)
32	70	Rp	½	25	11	16	<b>738 944 008</b>	0.201	132	36	118
32	70	Rp	¾	25	11	16	<b>738 944 018</b>	0.226	132	36	116
32	70	Rp	1	25	11	16	<b>738 944 028</b>	0.251	132	36	115
40	78	Rp	1 ¼	32	11	16	<b>738 944 009</b>	0.626	157	40	141
50	88	Rp	1 ½	40	11	16	<b>738 944 010</b>	0.670	150	44	128
63	101	Rp	2	50	11	16	<b>738 944 011</b>	1.170	164	48	140



### COOL-FIT 2.0 Adaptor fitting PE/stainless steel With loose union nut G

#### Model:

- Spigot fitting PE100 SDR11, metric with free end
- Stainless steel 1.4404 / 316L with female thread G
- Including flat seal EPDM
- Including Insulation made from NBR foam



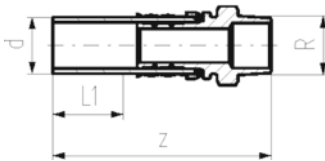
d (mm)	D (mm)	Thread Type	Size (inch)	DN (mm)	SDR	PN (bar)	Code	Weight (kg)	L (mm)	L1 (mm)	z (mm)
32	70	G	½	25	11	16	<b>738 944 308</b>	0.204	135	36	126
32	70	G	¾	25	11	16	<b>738 944 318</b>	0.219	135	36	129
32	70	G	1	25	11	16	<b>738 944 328</b>	0.317	135	36	129
40	78	G	1 ¼	32	11	16	<b>738 944 309</b>	0.538	155	40	148
40	116	G	1 ½	32	11	16	<b>738 944 319</b>	0.615	157	40	148
50	88	G	1 ½	40	11	16	<b>738 944 310</b>	0.758	164	44	154
63	101	G	2	50	11	16	<b>738 944 311</b>	1.237	186	48	170



### COOL-FIT 2.0 Adaptor fitting PE/brass With male thread R

#### Model:

- Spigot fitting PE100 SDR11, metric with free end
- Brass CuZn40Pb2 with male thread R
- Gasket: O-ring EPDM
- Including Insulation made from NBR foam



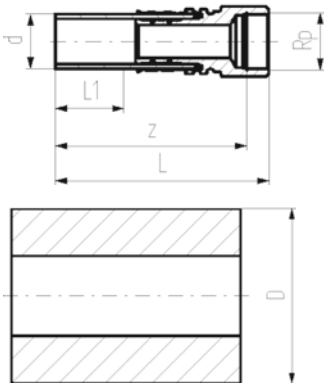
d (mm)	D (mm)	Thread Type	Size (inch)	DN (mm)	SDR	PN (bar)	Code	Weight (kg)	L1 (mm)	z (mm)
32	70	R	½	25	11	16	<b>738 954 508</b>	0.203	36	130
32	70	R	¾	25	11	16	<b>738 954 518</b>	0.211	36	134
32	70	R	1	25	11	16	<b>738 954 528</b>	0.221	36	134
40	78	R	1 ¼	32	11	16	<b>738 954 509</b>	0.631	40	156
50	88	R	1 ½	40	11	16	<b>738 954 510</b>	1.013	44	168
63	101	R	2	50	11	16	<b>738 954 511</b>	1.467	48	179



### COOL-FIT 2.0 Adaptor fitting PE/brass With female thread Rp

#### Model:

- Spigot fitting PE100 SDR11, metric with free end
- Brass CuZn40Pb2 with female tread Rp
- Gasket: O-ring EPDM
- Including Insulation made from NBR foam



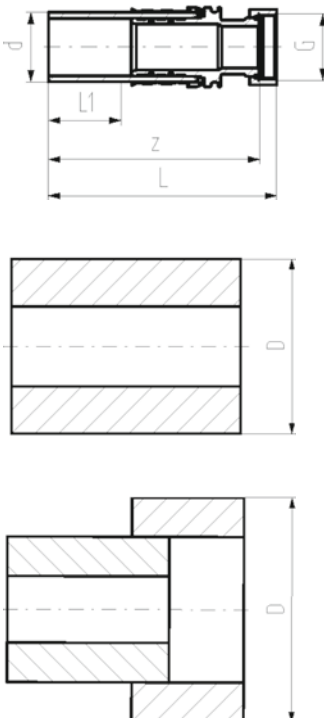
d (mm)	D (mm)	Thread Type	Size (inch)	DN (mm)	SDR	PN (bar)	Code	Weight (kg)	L (mm)	L1 (mm)	z (mm)
32	70	Rp	½	25	11	16	<b>738 954 008</b>	0.210	132	36	118
32	70	Rp	¾	25	11	16	<b>738 954 018</b>	0.237	132	36	116
32	70	Rp	1	25	11	16	<b>738 954 028</b>	0.264	132	36	115
40	78	Rp	1 ¼	32	11	16	<b>738 954 009</b>	0.667	157	40	141
50	88	Rp	1 ½	40	11	16	<b>738 954 010</b>	0.713	150	44	128
63	101	Rp	2	50	11	16	<b>738 954 011</b>	1.246	164	48	140



### COOL-FIT 2.0 Adaptor fitting PE/brass With loose union nut G

#### Model:

- Spigot fitting PE100 SDR11, metric with free end
- Brass CuZn40Pb2 with female thread G
- Including flat seal EPDM
- Including Insulation made from NBR foam



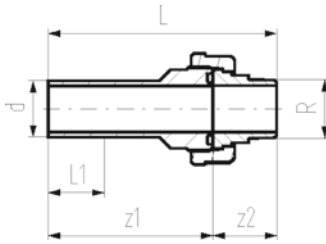
d (mm)	D (mm)	Thread Type	Size (inch)	DN (mm)	SDR	PN (bar)	Code	Weight (kg)	L (mm)	L1 (mm)	z (mm)
32	70	G	¾	25	11	16	<b>738 954 318</b>	0.224	135	36	126
32	70	G	1	25	11	16	<b>738 954 328</b>	0.263	135	36	129
32	108	G	1 ¼	25	11	16	<b>738 954 338</b>	0.335	137	36	129
40	78	G	1 ¼	32	11	16	<b>738 954 309</b>	0.569	155	40	148
40	116	G	1 ½	32	11	16	<b>738 954 319</b>	0.650	157	40	148
50	88	G	1 ½	40	11	16	<b>738 954 310</b>	0.801	164	44	154
63	101	G	2	50	11	16	<b>738 954 311</b>	1.310	186	48	170



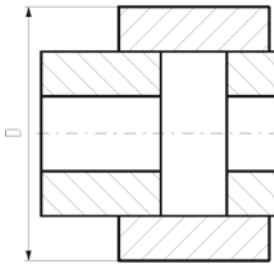
### COOL-FIT 2.0 Adaptor union PE/stainless steel With male thread R

#### Model:

- Union bush: Spigot fitting PE100 SDR11, metric with free end
- Union End: Stainless steel 1.4404 / 316L with male thread R
- Gasket: O-ring EPDM No. 748 410 008-011
- Union Nut: PEGF25
- Including Insulation made from NBR foam



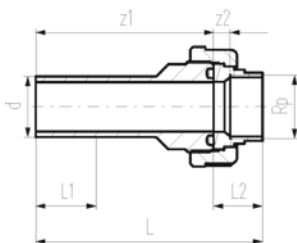
d (mm)	D (mm)	Thread Type	Size (inch)	DN (mm)	SDR	PN (bar)	Code	Weight (kg)	L (mm)	L1 (mm)	z1 (mm)	z2 (mm)
32	108	R	1	25	11	16	<b>738 544 708</b>	0.310	147	36	107	40
40	116	R	1 ¼	32	11	16	<b>738 544 709</b>	0.538	163	40	117	46
50	126	R	1 ½	40	11	16	<b>738 544 710</b>	0.660	172	44	124	48
63	139	R	2	50	11	16	<b>738 544 711</b>	1.073	191	48	136	55



### COOL-FIT 2.0 Adaptor union PE/stainless steel With female thread Rp

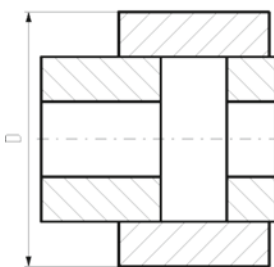
#### Model:

- Union bush: Spigot fitting PE100 SDR11, metric with free end
- Union End: Stainless steel 1.4404 / 316L with female thread Rp
- Gasket: O-ring EPDM No. 748 410 008-011
- Union Nut: PEGF25
- Including Insulation made from NBR foam



d (mm)	D (mm)	Thread Type	Size (inch)	DN (mm)	SDR	PN (bar)	Code	Weight (kg)
32	108	Rp	1	25	11	16	<b>738 544 208</b>	0.270
40	116	Rp	1 ¼	32	11	16	<b>738 544 209</b>	0.433
50	126	Rp	1 ½	40	11	16	<b>738 544 210</b>	0.587
63	139	Rp	2	50	11	16	<b>738 544 211</b>	0.883

d (mm)	L (mm)	L1 (mm)	L2 (mm)	z1 (mm)	z2 (mm)
32	136	36	29	107	10
40	150	40	33	118	11
50	158	44	34	124	13
63	175	48	39	136	14

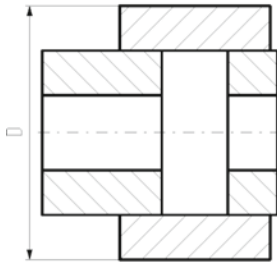
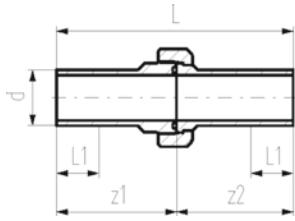




### COOL-FIT 2.0 Union PE/PE

**Model:**

- Union bush: Spigot fitting PE100 SDR11, metric with free end
- Union End: Spigot fitting PE100 SDR11, metric with free end
- Gasket: O-ring EPDM No. 748 410 008-014
- Union Nut: PEGF25
- Including Insulation made from NBR foam



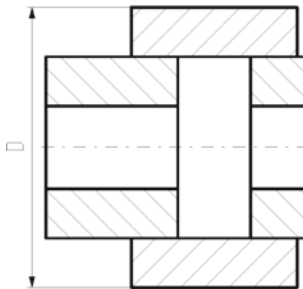
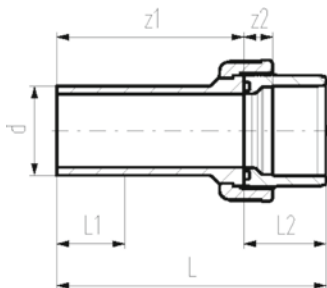
d (mm)	D (mm)	DN (mm)	SDR	PN (bar)	Code	L (mm)	L1 (mm)	z1 (mm)	z2 (mm)
32	108	25	11	16	<b>738 514 608</b>	211	36	107	104
40	116	32	11	16	<b>738 514 609</b>	234	40	118	117
50	126	40	11	16	<b>738 514 610</b>	247	44	124	123
63	139	50	11	16	<b>738 514 611</b>	268	48	136	132
75	151	65	11	16	<b>738 514 612</b>	303	55	154	149
90	166	80	11	16	<b>738 514 613</b>	293	62	149	144
110	186	100	11	16	<b>738 514 614</b>	321	72	162	159



### COOL-FIT 2.0 Adaptor Union PE/ABS

**Model:**

- Union bush: ABS Solvent cement socket
- Union End: Spigot fitting PE100 SDR11, metric with free end
- Gasket: O-ring EPDM No. 748 410 008-014
- Union Nut: ABS
- Including Insulation made from NBR foam



d (mm)	D (mm)	DN (mm)	SDR	PN (bar)	Code	Weight (kg)	L (mm)	L1 (mm)	L2 (mm)	z1 (mm)	z2 (mm)
32	108	25	11	16	<b>738 514 708</b>	0.117	137	36	33	104	11
40	116	32	11	16	<b>738 514 709</b>	0.196	156	40	39	117	13
50	126	40	11	16	<b>738 514 710</b>	0.268	169	44	46	123	15
63	139	50	11	16	<b>738 514 711</b>	0.427	190	48	58	132	21
75	151	65	11	16	<b>738 514 712</b>	0.730	211	55	62	149	18
90	166	80	11	16	<b>738 514 713</b>	0.974	215	62	69	146	19
110	186	100	11	16	<b>738 514 714</b>	1.478	235	72	72	163	11

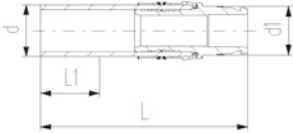
### COOL-FIT 2.0 Adaptor fitting PE/iFIT



#### Model:

- Spigot fitting PE100 SDR11, metric with free end
- iFIT module stainless steel 1.4404 / 316L
- Including insulation half shells

d	D	d1	DN	SDR	PN	Code	Weight	L	L1	L2
(mm)	(mm)	(mm)	(mm)		(bar)		(kg)	(mm)	(mm)	(mm)
32	70	25-32	25	11	10	<b>738 944 108</b>	0.229	132	36	80



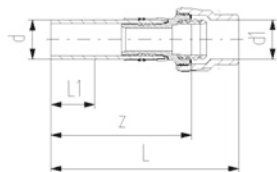
### COOL-FIT 2.0 Adaptor fitting PE/Sanipex MT



#### Model:

- Spigot fitting PE100 SDR11, metric with free end
- Sanipex MT adaptor brass CuZn40Pb2
- Including Insulation made from NBR foam

d	D	DN	PN	SDR	d1	Code	Weight	L	L1	L2	z
(mm)	(mm)	(mm)	(bar)		(mm)		(kg)	(mm)	(mm)	(mm)	(mm)
32	86	25	10	11	32	<b>738 954 118</b>	0.441	174	36	101	135

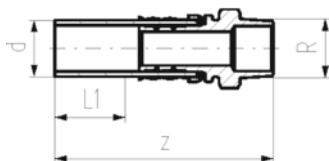


**COOL-FIT 2.0/4.0 Adaptor fitting PE/stainless steel  
With male thread R**



**Model:**

- Spigot fitting PE100 SDR11, metric with free end
- Stainless steel 1.4404 / 316L with male thread R
- Gasket: O-ring EPDM



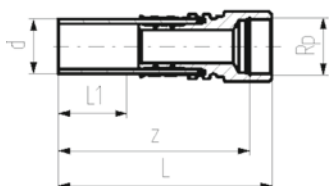
d (mm)	Thread Type	Size (inch)	DN (mm)	SDR	PN (bar)	Code	Weight (kg)	L1 (mm)	z (mm)
32	R	½	25	11	16	<b>738 940 508</b>	0.179	36	130
32	R	¾	25	11	16	<b>738 940 518</b>	0.187	36	134
32	R	1	25	11	16	<b>738 940 528</b>	0.196	36	134
40	R	1 ¼	32	11	16	<b>738 940 509</b>	0.572	40	156
50	R	1 ½	40	11	16	<b>738 940 510</b>	0.927	44	168
63	R	2	50	11	16	<b>738 940 511</b>	1.347	48	179

**COOL-FIT 2.0/4.0 Adaptor fitting PE/stainless steel  
With female thread Rp**



**Model:**

- Spigot fitting PE100 SDR11, metric with free end
- Stainless steel 1.4404 / 316L with female thread Rp
- Gasket: O-ring EPDM



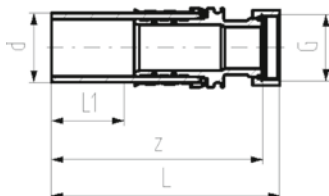
d (mm)	Thread Type	Size (inch)	DN (mm)	SDR	PN (bar)	Code	Weight (kg)	L (mm)	L1 (mm)	z (mm)
32	Rp	½	25	11	16	<b>738 940 008</b>	0.183	132	36	118
32	Rp	¾	25	11	16	<b>738 940 018</b>	0.208	132	36	116
32	Rp	1	25	11	16	<b>738 940 028</b>	0.233	132	36	115
40	Rp	¾	32	11	16	<b>738 940 009</b>	0.600	157	40	141
50	Rp	1 ½	40	11	16	<b>738 940 010</b>	0.641	150	44	128
63	Rp	2	50	11	16	<b>738 940 011</b>	1.133	164	48	140

**COOL-FIT 2.0/4.0 Adaptor fitting PE/stainless steel  
With loose union nut G**



**Model:**

- Spigot fitting PE100 SDR11, metric with free end
- Stainless steel 1.4404 / 316L with loose union nut G
- Including flat seal EPDM



d (mm)	Thread Type	Size (inch)	DN (mm)	SDR	PN (bar)	Code	Weight (kg)	L (mm)	L1 (mm)	z (mm)
32	G	½	25	11	16	<b>738 940 308</b>	0.186	133	36	126
32	G	¾	25	11	16	<b>738 940 318</b>	0.201	135	36	129
32	G	1	25	11	16	<b>738 940 328</b>	0.232	135	36	129
40	G	1 ¼	32	11	16	<b>738 940 309</b>	0.512	155	40	148
40	G	1 ½	32	11	16	<b>738 940 319</b>	0.572	157	40	148
50	G	1 ½	40	11	16	<b>738 940 310</b>	0.726	164	44	154
63	G	2	50	11	16	<b>738 940 311</b>	1.195	186	48	170

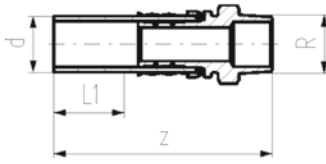


**COOL-FIT 2.0/4.0 Adaptor fitting PE/brass  
With male thread R**



**Model:**

- Spigot fitting PE100 SDR11, metric with free end
- Brass CuZn40Pb2 with male thread R
- Gasket: O-ring EPDM



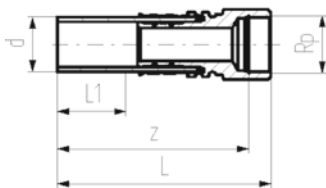
d (mm)	Thread Type	Size (inch)	DN (mm)	SDR	PN (bar)	Code	Weight (kg)	L1 (mm)	z (mm)
32	R	½	25	11	16	<b>738 950 508</b>	0.188	36	130
32	R	¾	25	11	16	<b>738 950 518</b>	0.196	36	134
32	R	1	25	11	16	<b>738 950 528</b>	0.206	36	134
40	R	1 ¼	32	11	16	<b>738 950 519</b>	0.608	40	156
50	R	1 ½	40	11	16	<b>738 950 510</b>	0.986	44	168
63	R	2	50	11	16	<b>738 950 511</b>	1.433	48	179

**COOL-FIT 2.0/4.0 Adaptor fitting PE/brass  
With female thread Rp**



**Model:**

- Spigot fitting PE100 SDR11, metric with free end
- Brass CuZn40Pb2 with female thread Rp
- Gasket: O-ring EPDM



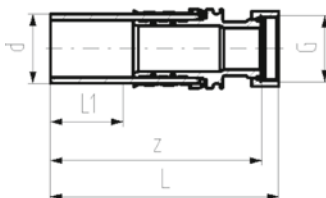
d (mm)	Thread Type	Size (inch)	DN (mm)	SDR	PN (bar)	Code	Weight (kg)	L (mm)	L1 (mm)	z (mm)
32	Rp	½	25	11	16	<b>738 950 008</b>	0.192	132	36	118
32	Rp	¾	25	11	16	<b>738 950 018</b>	0.219	132	36	116
32	Rp	1	25	11	16	<b>738 950 028</b>	0.246	132	36	115
40	Rp	1 ¼	32	11	16	<b>738 950 019</b>	0.641	157	40	141
50	Rp	1 ½	40	11	16	<b>738 950 010</b>	0.684	150	44	128
63	Rp	2	50	11	16	<b>738 950 011</b>	1.209	164	48	140

**COOL-FIT 2.0/4.0 Adaptor fitting PE/brass  
With loose union nut G**



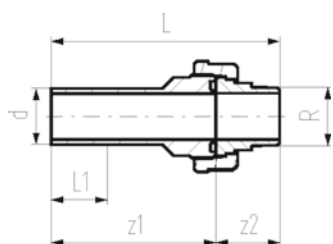
**Model:**

- Spigot fitting PE100 SDR11, metric with free end
- Brass CuZn40Pb2 with loose union nut G
- Including flat seal EPDM



d (mm)	Thread Type	Size (inch)	DN (mm)	SDR	PN (bar)	Code	Weight (kg)	L (mm)	L1 (mm)	z (mm)
32	G	¾	25	11	16	<b>738 950 318</b>	0.206	135	36	129
32	G	1	25	11	16	<b>738 950 328</b>	0.244	135	36	129
32	G	1 ¼	25	11	16	<b>738 950 338</b>	0.301	137	36	131
40	G	1 ¼	32	11	16	<b>738 950 309</b>	0.543	155	40	148
40	G	1 ½	32	11	16	<b>738 950 319</b>	0.607	157	40	148
50	G	1 ½	40	11	16	<b>738 950 310</b>	0.769	164	44	154
63	G	2	50	11	16	<b>738 950 311</b>	1.268	186	48	170

**COOL-FIT 2.0/4.0 Adaptor union PE/stainless steel  
With male thread R**

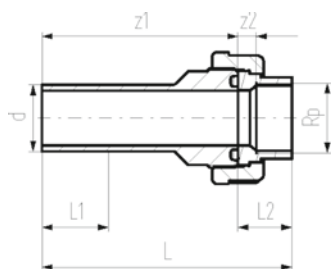


**Model:**

- Union bush: Spigot fitting PE100 SDR11, metric with free end
- Union End: Stainless steel 1.4404 / 316L with male thread R
- Gasket: O-ring EPDM No. 748 410 008-011
- Union Nut: PEGF25

d (mm)	Thread Type	Size (inch)	DN (mm)	SDR	PN	Code	Weight (kg)	L (mm)	L1 (mm)	z1 (mm)	z2 (mm)
32	R	1	25	11	16	<b>738 540 708</b>	0.276	147	36	107	40
40	R	1 ¼	32	11	16	<b>738 540 709</b>	0.495	163	40	117	46
50	R	1 ¼	40	11	16	<b>738 540 710</b>	0.606	172	44	124	48
63	R	2	50	11	16	<b>738 540 711</b>	1.000	191	48	136	55

**COOL-FIT 2.0/4.0 Adaptor union PE/stainless steel  
With female thread Rp**

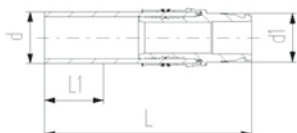


**Model:**

- Union bush: Spigot fitting PE100 SDR11, metric with free end
- Union End: Stainless steel 1.4404 / 316L with female thread Rp
- Gasket: O-ring EPDM No. 748 410 008-011
- Union Nut: PEGF25

d (mm)	Thread Type	Size (inch)	DN (mm)	SDR	PN	Code	Weight (kg)	L (mm)	L1 (mm)	z1 (mm)	z2 (mm)
32	Rp	1	25	11	16	<b>738 540 208</b>	0.234	147	36	107	40
40	Rp	1 ¼	32	11	16	<b>738 540 209</b>	0.387	163	40	117	46
50	Rp	1 ½	40	11	16	<b>738 540 210</b>	0.530	172	44	124	48
63	Rp	2	50	11	16	<b>738 540 211</b>	0.807	191	48	136	55

**COOL-FIT 2.0/4.0 Adaptor Fitting PE/iFIT**



**Model:**

- Spigot fitting PE100 SDR11, metric with free end
- iFIT module stainless steel 1.4404 / 316L

d (mm)	DN (mm)	SDR	PN (bar)	Code	Weight (kg)	L (mm)	L1 (mm)	L2 (mm)
32	25	11	10	<b>738 940 108</b>	0.211	132	36	80

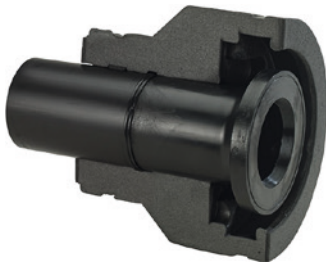
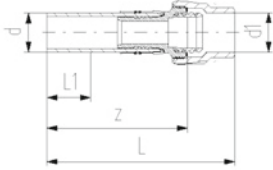
## COOL-FIT 2.0/4.0 Adaptor fitting PE/Sanipex MT



### Model:

- Spigot fitting PE100 SDR11, metric with free end
- Sanipex MT adaptor brass CuZn40Pb2

d	DN	SDR	PN	Code	Weight	d1	L	L1	L2	z
(mm)	(mm)		(bar)		(kg)	(mm)	(mm)	(mm)	(mm)	(mm)
32	25	11	10	<b>738 950 118</b>	0.412	32	174	36	101	135



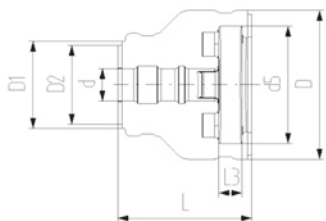
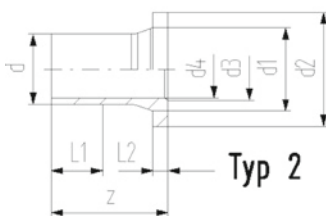
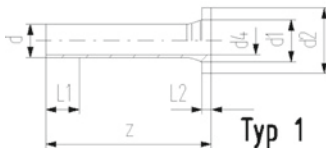
## COOL-FIT 2.0/4.0 Flange adaptor For flange joints metric

### Model:

- PE100 SDR11, metric
- Suitable for flange connections to metric (from d110 also to ANSI/ASME B16.5)
- Gasket: Profile flange gasket NBR No. 45 44 07, EPDM No. 48 44 07
- Type 1 without chamfer, Type 2 with chamfer
- Separate Fittings type A needed for joining

### Note:

Backing ring and gasket not included



d	D	d1	D1	d2	D2	DN	SDR	PN	Code	Weight
(mm)	(mm)	(mm)	(mm)	(mm)	(mm)	(mm)				(kg)
32	135	40	90	68	75	25	11	16	<b>738 710 008</b>	0.051
40	170	50	110	78	90	32	11	16	<b>738 710 009</b>	0.075
50	180	61	110	88	90	40	11	16	<b>738 710 010</b>	0.630
63	200	75	125	102	110	50	11	16	<b>738 710 011</b>	0.173
75	220	89	140	122	125	65	11	16	<b>738 710 012</b>	1.210
90	240	105	160	138	140	80	11	16	<b>738 710 013</b>	1.193
110	270	125	180	158	160	100	11	16	<b>738 710 014</b>	1.574
140	300	155	225	188	200	125	11	16	<b>738 710 016</b>	2.412

d	L	L1	L2	L3	z	d3	d4	d5	Type
(mm)	(mm)	(mm)	(mm)	(mm)	(mm)	(mm)	(mm)	(mm)	
32	162	36	10	26	190		26	121	1
40	165	40	11	28	197		32	146	1
50	178	44	12	30	214		40	156	1
63	230	48	14	32	270		51	171	1
75	232	55	16	34	279		61	191	2
90	245	62	17	35	299	78	73	206	2
110	254	72	18	36	320	100	90	235	2
140	299	84	25	38	383	127	127	256	2



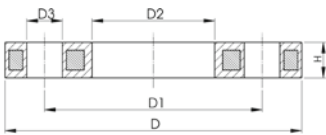
### Backing flange PP-Steel metric For butt fusion systems metric

**Model:**

- Material: PP (30% glass-fibre reinforced) with steel ring
- Connecting dimension: ISO 7005, EN 1092, BS 4504, DIN 2501
- **Bolt circle PN 10**

AL: number of holes

- <sup>1)</sup> Suitable for socket -and butt fusion systems
- <sup>2)</sup> Combined version, bolt circle metric - ANSI

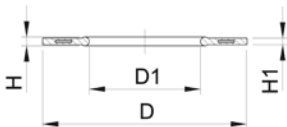


	d (mm)	D (mm)	DN (mm)	PN (bar)	Code	Weight (kg)	D1 (mm)	D2 (mm)	D3 (mm)	H max. (mm)	AL	SC
1	32	115	25	16	<b>727 700 208</b>	0.429	85	42	14	16	4	M12
1	40	140	32	16	<b>727 700 209</b>	0.621	100	51	18	16	4	M16
1	50	150	40	16	<b>727 700 210</b>	0.722	110	62	18	20	4	M16
1	63	165	50	16	<b>727 700 211</b>	0.900	125	78	18	20	4	M16
1	75	185	65	16	<b>727 700 212</b>	1.110	145	92	18	20	4	M16
	90	200	80	16	<b>727 700 313</b>	1.390	160	108	18	20	8	M16
	110	220	100	16	<b>727 700 314</b>	1.407	180	128	18	20	8	M16
	125	220	100	16	<b>727 700 315</b>	1.408	180	135	18	20	8	M16
	140	250	125	16	<b>727 700 716</b>	2.318	210	158	18	24	8	M16

### Profile Flange Gasket EPDM/FKM metric



Design d710 - d1000



**Model:**

- For all metric GF Flange Adaptors
- Hardness: 70° Shore EPDM, 75° Shore FKM
- EPDM: approved acc. to DVGW Water W 270, KTW recommendation
- Centering on the inner diameter of the screw crown
- material steel insert: carbon steel
- Rubber-steel body combined with rubber profile cord ring up to d630
- Rubber-steel body ideal for big dimensions (d710 - d1000)

di FA are the suitable inner diameters of flanges adaptors

	d (mm)	D (mm)	di FA (mm)	D1 (mm)	DN (mm)	PN (bar)	EPDM Code	FKM Code	Weight (kg)	H (mm)	H1 (mm)
	32	71	18 - 28	28	25	16	<b>748 440 708</b>	<b>749 440 708</b>	0.019	4	3
	40	82	30 - 40	40	32	16	<b>748 440 709</b>	<b>749 440 709</b>	0.026	4	3
	50	92	36 - 46	46	40	16	<b>748 440 710</b>	<b>749 440 710</b>	0.039	4	3
	63	107	48 - 58	58	50	16	<b>748 440 711</b>	<b>749 440 711</b>	0.050	5	4
	75	127	59 - 69	69	65	16	<b>748 440 712</b>	<b>749 440 712</b>	0.082	5	4
	90	142	73 - 84	84	80	16	<b>748 440 713</b>	<b>749 440 713</b>	0.083	5	4
	110	162	94 - 104	104	100	16	<b>748 440 714</b>	<b>749 440 714</b>	0.127	6	5
	140	192	127 - 137	137	125	16	<b>748 440 716</b>	<b>749 440 716</b>	0.173	6	5

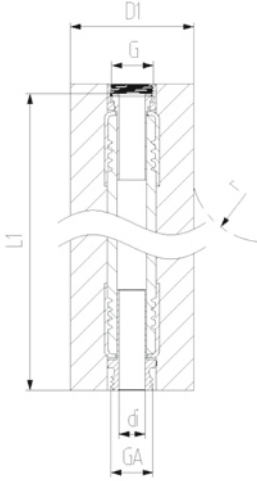
# COOL-FIT 2.0 Flexible Hoses

## COOL-FIT 2.0 Flexible hose



### Model:

- EPDM flexible hose with stainless steel protection
- Brass adaptors
- Pre-Insulation made from NBR foam with outer jacket impact resistant and tearproof
- With loose union nut G on one end and male thread GA on the other



d (mm)	D1 (mm)	Thread Type	Size (inch)	DN (mm)	PN (bar)	Code	di (mm)	L1 (mm)	r (mm)
20	39	G/GA	1/2"	15	10	<b>738 924 206</b>	15	1000	119
25	44	G/GA	3/4"	20	10	<b>738 924 207</b>	19	1000	156
32	51	G/GA	1"	25	10	<b>738 924 208</b>	25	1000	192
40	59	G/GA	1 1/4"	32	8	<b>738 924 209</b>	32	1500	252
50	69	G/GA	1 1/2"	40	6	<b>738 924 210</b>	38	2000	312
63	82	G/GA	2"	50	6	<b>738 924 211</b>	52	2000	372

# COOL-FIT 2.0 Valves

## COOL-FIT 2.0 Ball valve hand-operated

### Model:

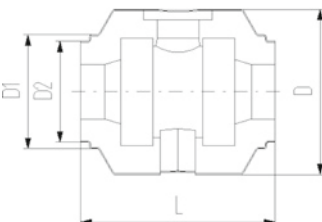
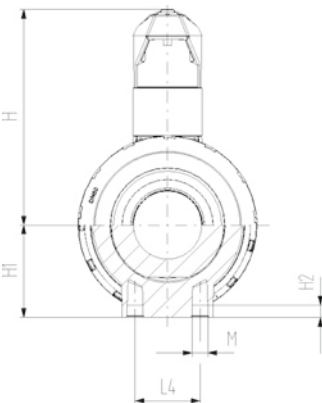
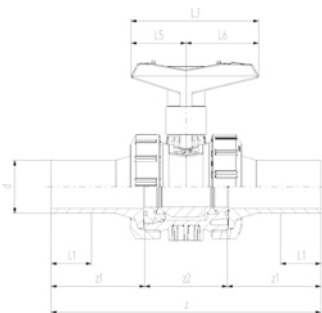
- Material: PVC-U with spigot PE100 SDR11, metric
- Ball seals type 542-PE/ blue lever ; type 546 PTFE/ red lever
- Integrated stainless steel mounting inserts for type 546
- Including insulation half shells



d (mm)	DN (mm)	PN	kv-value ( $\Delta p=1$ bar) (L/min)	Code	Weight (kg)
32	25	16	700	<b>138 541 308</b>	0.550
40	32	16	1000	<b>138 541 309</b>	0.892
50	40	16	1600	<b>138 541 310</b>	1.187
63	50	16	3100	<b>138 541 311</b>	2.153
75	65	16	5000	<b>138 546 312</b>	5.550
90	80	16	7000	<b>138 546 313</b>	8.150

d (mm)	DN (mm)	D (mm)	D1 (mm)	D2 (mm)	L (mm)	L1 (mm)	L3 (mm)	L4 (mm)	L5 (mm)	L6 (mm)	H (mm)	H1 (mm)	H2 (mm)	z (mm)	z1 (mm)
32	25	135	97	82	152	36	93		34	59	97	34		223	76
40	32	157	117	97	170	40	110		41	69	114	42		249	82
50	40	169	117	97	184	44	180		41	69	120	49		271	91
63	50	204	132	117	227	48	128		49	79	141	62		321	110
75	65	235	147	132	276	55	270	70	64	206	194	85	15	386	125
90	80	255	168	147	297	62	270	70	64	206	200	105	15	421	140

d (mm)	DN (mm)	z2 (mm)	M	Closest inch (inch)	Type
32	25	71		1	542
40	32	85		1 ¼	542
50	40	89		1 ½	542
63	50	101		2	542
75	65	136	M8	2 ½	546
90	80	141	M8	3	546

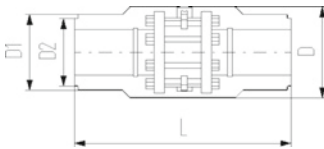
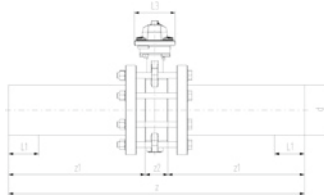
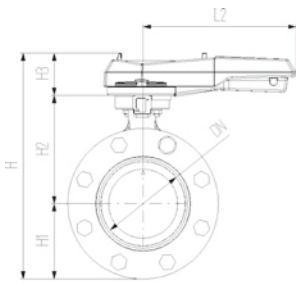




**COOL-FIT 2.0 Wafer-style butterfly valve kit type 567**  
**Hand lever with ratchet settings**

**Model:**

- Material: PVC-U with spigot PE100 SDR11, metric
- Including flange adaptors, backing flanges PP-Steel, bolts and insulation half shells



d (mm)	DN (mm)	PN	kv-value ( $\Delta p=1$ bar) (l/min)	EPDM Code	Weight (kg)
110	100	10	6500	<b>138 567 314</b>	3.500
140	125	10	11500	<b>138 567 316</b>	4.500

d (mm)	DN (mm)	D (mm)	D1 (mm)	D2 (mm)	L (mm)	L1 (mm)	L2 (mm)	L3 (mm)	z (mm)	z1 (mm)	z2 (mm)	H (mm)	H1 (mm)	H2 (mm)	H3 (mm)
110	100	260	188	168	552	72	255	106	696	320	56	325	104	167	55
140	125	287	233	208	662	84	255	106	830	383	64	352	117	181	55

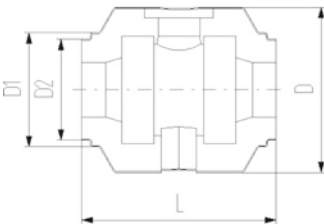
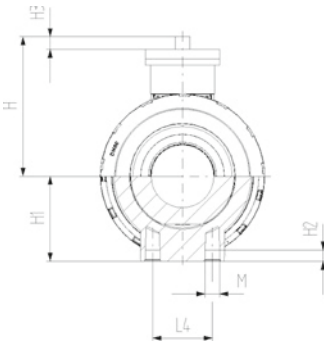
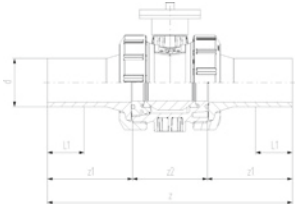
d (mm)	DN (mm)	closest inch (inch)
110	100	4
140	125	5



## COOL-FIT 2.0 Ball valve type 546 Pro bare shaft

### Model:

- Material: PVC-U with spigot PE100 SDR11, metric
- Ball seat PTFE
- Integrated stainless steel mounting inserts
- Interface according to DIN EN ISO 5211
- Including insulation half shells



d (mm)	DN (mm)	PN	kv-value ( $\Delta p=1$ bar) (L/min)	SDR	EPDM Code	Weight (kg)
32	25	16	700	11	<b>138 546 408</b>	0.560
40	32	16	1000	11	<b>138 546 409</b>	0.900
50	40	16	1600	11	<b>138 546 410</b>	1.190
63	50	16	3100	11	<b>138 546 411</b>	0.100
75	65	16	5000	11	<b>138 546 412</b>	5.550
90	80	16	7000	11	<b>138 546 413</b>	8.150

d (mm)	DN (mm)	D (mm)	D1 (mm)	D2 (mm)	L (mm)	L1 (mm)	H (mm)	H1 (mm)	H2 (mm)	H3 (mm)	z (mm)	z1 (mm)	z2 (mm)	M
32	25	135	97	82	152	36	72	36	12	11	223	76	71	M6
40	32	157	117	97	170	40	84	44	15	11	249	82	85	M8
50	40	169	117	97	184	44	90	51	15	11	271	91	89	M8
63	50	204	132	117	227	48	105	64	15	10	321	110	101	M8
75	65	235	147	132	276	55	177	85	15	21	386	125	136	M8
90	80	235	168	147	297	62	189	105	15	21	421	140	141	M8

d (mm)	DN (mm)	Closest inch	Hole pattern (inch)
32	25	1	F05/F03
40	32	1 ¼	F05/F03
50	40	1 ½	F05/F03
63	50	2	F05/F03
75	65	2 ½	F07
90	80	3	F07

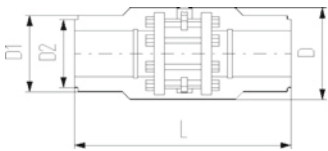
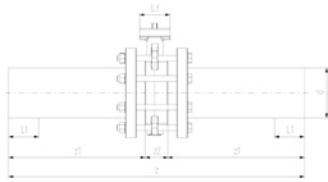
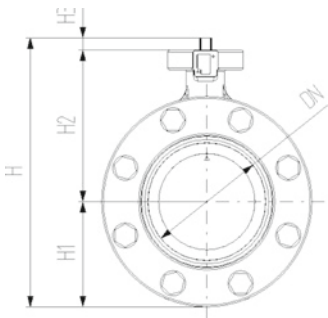




**COOL-FIT 2.0 Butterfly valve kit type 567 PVC-U  
Bare shaft**

**Model:**

- Material: PVC-U with spigot PE100 SDR11, metric
- Interface F07 according to DIN/ISO 5211
- Including flange adaptors, backing flanges PP-Steel, bolts and insulation half shells



d (mm)	DN (mm)	PN	kv-value ( $\Delta p=1$ bar) (l/min)	EPDM Code
110	100	10	6500	<b>138 567 414</b>
140	125	10	11500	<b>138 567 416</b>

d (mm)	DN (mm)	D (mm)	D1 (mm)	D2 (mm)	L (mm)	L1 (mm)	L3 (mm)	z (mm)	z1 (mm)	z2 (mm)	H1 (mm)	H2 (mm)	H3 (mm)	closest inch (inch)
110	100	260	188	168	552	72	106	696	320	56	104	167	55	4
140	125	287	233	208	662	84	106	830	383	64	117	181	55	5



**Wafer-style, intermediate installation butterfly valve type 565 PVDF/PA-GF**

**With hand lever**

**Flange standard metric/ANSI/BS/JIS**

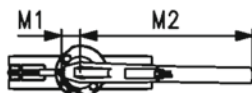
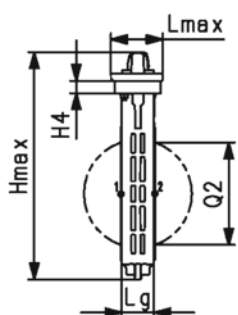
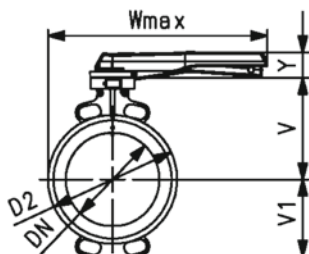
**Suitable for ABS, PVC-U, PVC-C, ecoFIT, COOL-FIT and PROGEF Systems**

**Model:**

- Installation length: EN558 row 20, ISO 5752 row 20, API 609 table 2
- Flange standards: ISO 7005 PN10/16, EN 1092 PN10/16, DIN 2501 PN10/16, ANSI/ASME B 16.5 Class 150, BS 1560: 1989 Class 125/150; BS 4504 PN10/16, JIS B 2220 10K, JIS B 2239 10K
- For easy installation and removal
- Lockable ergonomic lever
- Suitable for water and water treatment applications (e.g. sea water, drinking water and industrial water)

**Option:**

- Individual configuration of the valve possible
- Pneumatic or electric actuators from GF
- Double sensor for electrical position feedback incl. LED feedback



DN (mm)	PN (bar)	d (mm)	Size (inch)	kv-value ( $\Delta p=1$ bar) (L/min)	EPDM Code	SP	Weight (kg)	FKM Code	SP	Weight (kg)
50	16	63	2	1445	<b>199 565 000</b>	1	1.3	<b>199 565 020</b>	1	1.4
65	16	75	2 ½	2530	<b>199 565 001</b>	1	1.5	<b>199 565 021</b>	1	1.6
80	16	90	3	4020	<b>199 565 002</b>	1	1.7	<b>199 565 022</b>	1	1.8
100	16	110	4	5850	<b>199 565 003</b>	1	2.5	<b>199 565 023</b>	1	2.7
125	16	140	5	11900	<b>199 565 004</b>	1	3.1	<b>199 565 024</b>	1	3.3
150	16	160	6	18050	<b>199 565 005</b>	1	4.0	<b>199 565 025</b>	1	4.3
200	10	225	8	43667	<b>199 565 006</b>	1	5.3	<b>199 565 026</b>	1	5.7

DN (mm)	D2 (mm)	Wmax (mm)	Hmax (mm)	Lmax (mm)	H4 (mm)	V (mm)	V1 (mm)	Lg (mm)	M1 (mm)	M2 (mm)	Y (mm)	Q2 (mm)
50	100.0	264.0	249.5	96.0	23.0	133.5	63.0	43.0	35.5	204.5	53.0	28.5
65	121.0	271.0	275.5	96.0	23.0	140.0	82.0	46.0	35.5	204.5	53.0	44.0
80	138.0	273.5	288.0	96.0	23.0	146.0	89.0	46.0	35.5	204.5	53.0	63.5
100	158.5	334.0	324.0	96.0	23.0	166.5	104.0	52.0	35.5	254.5	53.0	84.0
125	187.0	348.0	351.0	96.0	23.0	180.0	118.0	56.0	35.5	254.5	53.0	110.5
150	213.0	426.0	372.5	96.0	23.0	189.0	130.5	56.0	35.5	319.5	53.0	137.5
200	267.0	453.0	422.0	96.0	23.0	209.5	159.0	60.0	35.5	319.5	53.0	190.5



**Wafer-style, intermediate installation butterfly valve type 565 PVDF/PA-GF**

**Bare shaft**

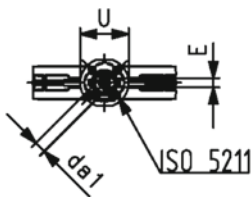
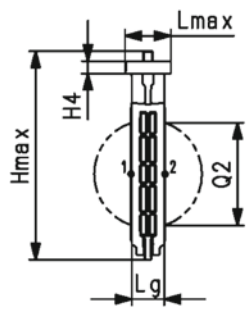
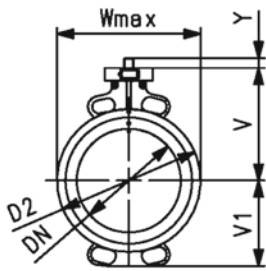
**Flange standard metric/ANSI/BS/JIS Suitable for ABS, PVC-U, PVC-C, ecoFIT, COOL-FIT and PROGEF Systems**

**Model:**

- Installation length: EN558 row 20, ISO 5752 row 20, API 609 table 2
- Flange standards: ISO 7005 PN10/16, EN 1092 PN10/16, DIN 2501 PN10/16, ANSI/ASME B 16.5 Class 150, BS 1560: 1989 Class 125/150; BS 4504 PN10/16, JIS B 2220 10K, JIS B 2239 10K
- For easy installation and removal
- Suitable for water and water treatment applications (e.g. sea water, drinking water and industrial water)

**Option:**

- Individual configuration of the valve possible
- Hand (lockable), pneumatic or electric actuators from GF
- Double sensor for electrical position feedback incl. LED feedback

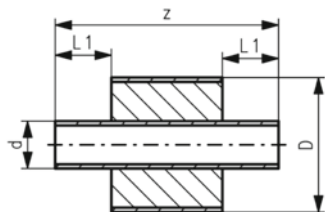
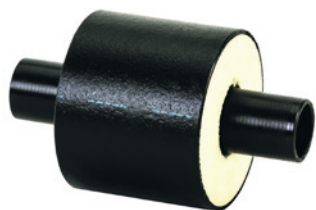


DN (mm)	PN (bar)	d (mm)	Size (inch)	kv-value ( $\Delta p=1$ bar) (L/min)	Acc.to ISO 5211	EPDM Code	SP	Weight (kg)
50	16	63	2	1445	F07	<b>199 565 100</b>	1	0.9
65	16	75	2 ½	2530	F07	<b>199 565 101</b>	1	1.1
80	16	90	3	4020	F07	<b>199 565 102</b>	1	1.3
100	16	110	4	5850	F07	<b>199 565 103</b>	1	2.0
125	16	140	5	11900	F07	<b>199 565 104</b>	1	2.6
150	16	160	6	18050	F07	<b>199 565 105</b>	1	3.7
200	10	225	8	43667	F07	<b>199 565 106</b>	1	4.7
250	10	280	10	62333	F10	<b>199 565 107</b>	1	8.8
300	6	315	12		F10	<b>199 565 108</b>	1	12.6

DN (mm)	FKM Code	SP	Weight (kg)
50	<b>199 565 120</b>	1	1.0
65	<b>199 565 121</b>	1	1.2
80	<b>199 565 122</b>	1	1.4
100	<b>199 565 123</b>	1	2.2
125	<b>199 565 124</b>	1	2.9
150	<b>199 565 125</b>	1	3.8
200	<b>199 565 126</b>	1	5.2
250	<b>199 565 127</b>	1	9.5
300	<b>199 565 128</b>	1	13.7

DN (mm)	D2 (mm)	Wmax (mm)	Lmax (mm)	Hmax (mm)	H4 (mm)	V (mm)	V1 (mm)	Lg (mm)	da1 (mm)	E (mm)	U (mm)	Y (mm)	Q2 (mm)
50	100.0	118.5	85.5	222.5	23.0	133.5	63.0	43.0	14.1	11.0	90.0	27.0	28.5
65	121.0	132.5	85.5	248.5	23.0	140.0	82.0	46.0	14.1	11.0	90.0	27.0	44.0
80	138.0	138.0	85.5	261.0	23.0	146.0	89.0	46.0	14.1	11.0	90.0	27.0	63.5
100	158.5	158.5	85.5	286.0	23.0	166.5	104.0	52.0	18.1	14.0	90.0	16.0	84.0
125	187.0	187.0	85.5	313.5	23.0	180.0	118.0	56.0	18.1	14.0	90.0	16.0	110.5
150	213.0	213.0	85.5	337.5	23.0	189.0	130.5	56.0	22.2	17.0	90.0	19.0	137.5
200	267.0	267.0	85.5	387.0	23.0	209.5	159.0	60.0	22.2	17.0	90.0	18.5	190.5
250	325.5	325.5	125.5	499.0	23.0	262.5	195.5	68.0	28.2	22.0	125.0	41.0	239.0
300	380.0	380.0	125.5	555.0	23.0	284.5	230.5	78.0	28.2	22.0	125.0	41.0	285.5

# COOL-FIT 2.0 Accessories



## COOL-FIT 2.0 Barrel nipple with insulation, d32-d140

### Model:

- Pre-insulated PE100 SDR11 metric
- Insulation made from GF HE foam
- Impact resistant. Color: black
- For short connections between COOL-FIT 2.0 Fittings Typ A

d (mm)	d/D (mm)	SDR	PN (bar)	Code	Weight (kg)	L1 (mm)	z (mm)	closest inch (inch)
32	32/75	11	16	<b>738 914 408</b>	0.072	36	121	1
40	40/90	11	16	<b>738 914 409</b>	0.104	40	125	1 ¼
50	50/90	11	16	<b>738 914 410</b>	0.136	44	133	1 ½
63	63/110	11	16	<b>738 914 411</b>	0.216	48	141	2
75	75/125	11	16	<b>738 914 412</b>	0.313	55	155	2 ½
90	90/140	11	16	<b>738 914 413</b>	0.459	62	169	3
110	110/160	11	16	<b>738 914 414</b>	0.712	72	189	4
140	140/200	11	16	<b>738 914 416</b>	1.226	90	213	6

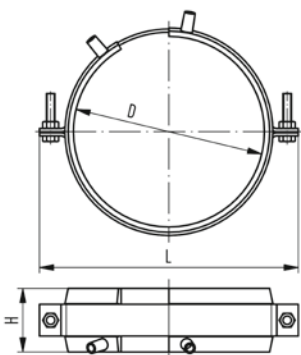


## COOL-FIT 2.0 adhesive ring

### Model:

- Double sided, for sealing connections of fittings with barrel nipple

d (mm)	D (mm)	Code	Weight (kg)
32	75	<b>738 010 012</b>	0.002
40, 50	90	<b>738 010 013</b>	0.002
63	110	<b>738 010 014</b>	0.003
75	125	<b>738 010 015</b>	0.003
90	140	<b>738 010 016</b>	0.003
110	160	<b>738 010 017</b>	0.005
110	180	<b>738 010 018</b>	0.005
140	200	<b>738 010 019</b>	0.006

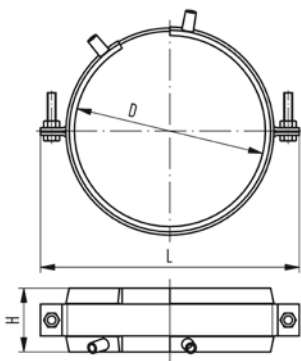


## COOL-FIT 2.0 fixed point

### Model:

- The product consists of two components namely electrofusion tapes and pipe brackets.
- Electrofusion welded tape as permanent connection to transmit the forces that occur in the pipe to the fixed point.
- The delivered pipe brackets are needed to deliver welding pressure during installation and give stability during operation.
- For welding, use an MSA2.x, MSA4.x, MSA 250, 300, 350, 400 or commercially available 220 V fusion machines.
- If you use an MSA fusion machine from GF Piping Systems, use the 799 350 339 adapter or the 790 156 032 y-cable set.
- Please take note of the maximum allowed forces for this version in the table below.
- **Fixed point brackets and cross braces have to be calculated and obtained by the installer. They are not included in the fixed point set from GF.**

d (mm)	D (mm)	Code	Weight (kg)	L (mm)	H (mm)	max. Force (kN)	closest inch (inch)
32	75	<b>738 912 012</b>	0.750	150	60	2.0	1
40 - 50	90	<b>738 912 013</b>	0.895	170	60	3.0 / 5.0	1 ¼ / 1 ½
63	110	<b>738 912 014</b>	0.904	180	60	8.0	2



d (mm)	D (mm)	Code	Weight (kg)	L (mm)	H (mm)	max. Force (kN)	closest inch (inch)
75	125	<b>738 912 015</b>	1.103	215	60	10.0	2 1/2
90	140	<b>738 912 016</b>	1.188	220	60	10.0	3
110	160	<b>738 912 017</b>	1.177	255	60	10.0	4
140	200	<b>738 912 019</b>	1.600	310	60	10.0	5



### COOL-FIT Y cables kit

- The COOL-FIT Y cables are used to speed up the installation of the fixed points electrofusion tapes. The Y cables allow the welding in parallel of 2 E-Tapes, halving the total duration of the fusion process.
- Compatible with all MSA Units

Type	Code	Weight (kg)
4 leads cable with 2mm plugs in output	<b>790 156 032</b>	0.385



### Hand scraper

- The Hand Scraper can be used to prepare the fusion zone on PE80 pipes.

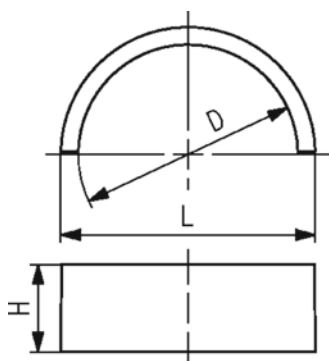
Description	Code	Weight (kg)
Hand scraper with long handle	<b>799 198 094</b>	0.143



### COOL-FIT 2.0F fixed point set

#### Model:

- Four PVC-U half shells as permanent connection to transmit the forces that occur in the pipe to the fixed point.
- For cementing use Tangit RAPID, Tangit RAPID static mixer and Tangit RAPID dispenser
- Please take note of the maximum allowed forces for this version in the table below.
- **Fixed point brackets and cross braces have to be calculated and obtained by the installer. They are not included in the fixed point set from GF.**



D (mm)	d (mm)	Code	Weight (kg)	L (mm)	H (mm)	max. Force (kN)	closest inch (inch)
75	32	<b>738 912 312</b>	0.750	87	30	2.0	1
90	40 - 50	<b>738 912 313</b>	0.895	105	35	3.0 / 5.0	1 ¼ / 1 ½
110	63	<b>738 912 314</b>	0.904	128	35	8.0	2
125	75	<b>738 912 315</b>	1.103	142	35	10.0	2 1/2
140	90	<b>738 912 316</b>	1.188	162	35	10.0	3
160	110	<b>738 912 317</b>	1.177	183	35	10.0	4
200	140	<b>738 912 319</b>	1.600	221	35	10.0	5



### Tangit Rapid cartridges kit

- 2-Component-Adhesive
- For PVC-U and PVC-C
- Tangit Rapid Kit consists of 6 cartridges, 12 mixers and 2 plastic brushes
- Tool needed: Tangit Rapid dispenser and mixers
- Check chemical resistance list ([www.gfps.com](http://www.gfps.com))

Language	description	Code	Weight (kg)
DE, FR	50 ml	<b>799 302 005</b>	0.566
FR, NL	50 ml	<b>799 302 041</b>	0.566
DK, SE	50 ml	<b>799 302 042</b>	0.566
GB, IT	50 ml	<b>799 302 043</b>	0.566
FI, NO	50 ml	<b>799 302 044</b>	0.566
DE, ES, FR, GB, IT, NL, PT	400 ml	<b>799 302 007</b>	3.700
DK, FI, NO, SE	400 ml	<b>799 302 047</b>	3.700



### Tangit Rapid mixer set

- For Tangit Rapid cartridges
- Bag with 30 pieces for 50ml and 15 pieces for 400ml

description	Code	SP	Weight (kg)
50ml	<b>799 302 032</b>	1	0.160
400ml	<b>799 302 033</b>	1	0.190



### Tangit Rapid dispenser

- For Tangit Rapid cartridges

d-d (mm)	description	Code	SP	Weight (kg)
16 - 140	50ml	<b>799 302 011</b>	1	0.175
110 - 400	400ml	<b>799 302 013</b>	1	1.100



### COOL-FIT 2.0/4.0 Adhesive cement

#### Model:

- For the jointing of NBR foam insulations of flexible hoses and transition fittings

Code	SP	Weight (kg)
<b>738 010 060</b>	1	0.240



### COOL-FIT 2.0/4.0 Adhesive tape

#### Model:

- For the jointing of NBR foam insulations of flexible hoses and transition fittings
- 30m on a roll

Code	SP	Weight (kg)
<b>738 010 065</b>	1	0.400



### Tangit KS Cleaner

- Special cleaner for plastic fusion connections in the material of PP, PE, PVDF and PB
- Suitable for Tangit Rapid. Must not be used for solvent cementing
- DVGW approved
- DW 5290 BR 0464

Size	Code	Weight (kg)
1 liter	<b>799 298 023</b>	0.872



### Marker

Type	Code	Weight (kg)
silver	<b>799 350 364</b>	0.010



### Deburring tool

- Replacable blade

Code	SP	Weight (kg)
<b>790 205 082</b>	1	0.058



### Measuring tape (circumference and diameter)

- Circumference: 2 m / 79 inch
- Diameter: 630 mm / 25 inch

Code	SP	Weight (kg)
<b>790 205 087</b>	1	0.045

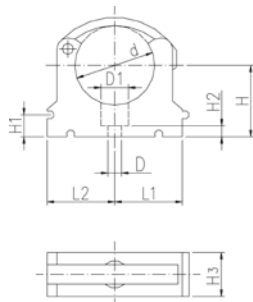
### KLIP-IT pipe clip type 061 PP metric



#### Model:

- Material: clip and safety clip PP black, UV resistant
- d16 - d63: height designed for ball valve type 546 and 543
- **Minimum order quantity: standard packagings SP**

d	D	d	D1	Code	SP	Weight
(mm)	(mm)	(inch)	(mm)			(kg)
75	9	2 ½	17	<b>167 061 012</b>	10	0.057
90	9	3	17	<b>167 061 013</b>	10	0.092
110	9	4	17	<b>167 061 014</b>	10	0.117
125	9		17	<b>167 061 015</b>	10	0.180
140	9	5	17	<b>167 061 016</b>	10	0.224
160	9		17	<b>167 061 017</b>	10	0.242

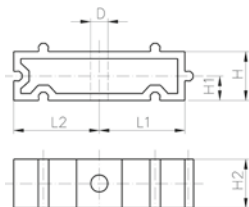


d	H	H1	H2	H3	L1	L2	SC	closest inch
(mm)	(mm)	(mm)	(mm)	(mm)	(mm)	(mm)		(inch)
75	58	10	10	25	52	52	M8	2 ½
90	65	10	10	28	65	65	M8	3
110	75	10	10	28	79	79	M8	4
125	90	10	10	32	88	88	M8	
140	110	10	10	32	98	98	M8	5
160	108	10	10	32	109	109	M8	6

### KLIP-IT spacer type 061 PP

#### Model:

- For pipe clips type 061/061H, PP black, UV resistant
- **Minimum order quantity: standard packaging SP**

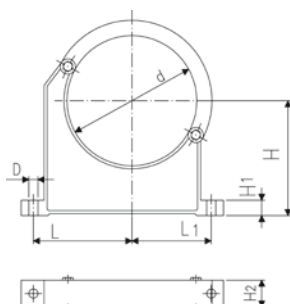


d	Inch	Code	SP	Weight	D	L1	L2	H	H1	H2	SC
(mm)	(inch)			(kg)	(mm)	(mm)	(mm)	(mm)	(mm)	(mm)	
75	2 ½	<b>167 061 162</b>	10	0.027	9	52	52	20	10	25	M8
90	3	<b>167 061 163</b>	10	0.039	9	65	65	20	10	28	M8
110	4	<b>167 061 164</b>	10	0.048	9	79	79	20	10	28	M8
125	4 ½	<b>167 061 165</b>	10	0.059	9	88	88	20	10	32	M8
140	5	<b>167 061 166</b>	10	0.065	9	98	98	20	10	32	M8
160	6	<b>167 061 167</b>	10	0.071	9	109	109	20	10	32	M8

### Pipe clip type 060 PP metric

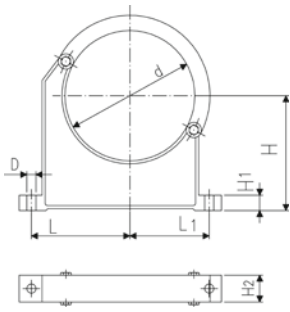
#### Model:

- Material: clip and safety clip PP black, UV resistant
- **Minimum order quantity: standard packaging SP or gross packaging GP**
- Accidental opening of the safety clip is not possible
- Clip and safety clip are not assembled in the packaging.
- Pipes with flanges can be installed directly



d	D	Code	SP	Weight	L	L1	H	H1	H2	SC	closest inch
(mm)	(mm)			(kg)	(mm)	(mm)	(mm)	(mm)	(mm)		(inch)
90	9	<b>167 060 038</b>	10	0.144	89	71	105	15	33	M8	3
110	9	<b>167 060 039</b>	10	0.158	94	80	115	15	33	M8	4
125	11	<b>167 060 040</b>	10	0.249	116	91	130	20	35	M10	





d (mm)	D (mm)	Code	SP	Weight (kg)	L (mm)	L1 (mm)	H (mm)	H1 (mm)	H2 (mm)	SC	closest inch (inch)
140	11	<b>167 060 041</b>	10	0.260	121	99	130	20	35	M10	5
160	11	<b>167 060 042</b>	10	0.296	131	107	148	20	35	M10	6
180	11	<b>167 060 043</b>	10	0.327	143	115	163	20	35	M10	7
200	13	<b>167 060 019</b>	5	0.539	151	120	175	25	39	M12	8

# Tools



## COOL-FIT 2.0/4.0 Foam removal and peeling tool

### Model:

- Tool for foam removal and peeling of COOL-FIT 2.0 and 4.0 pipes

d (mm)	Code	Weight (kg)
32-90	<b>799 738 001</b>	10.500
110-225	<b>799 738 003</b>	16.500



## COOL-FIT 2.0/4.0 Upgrade kit foam removal and peeling tool d140-d225

### Model:

- Upgrade for COOL-FIT 2.0/4.0 foam removal and peeling tool d110-d225 (799738003)
- For easier foam removal and peeling of COOL-FIT 2.0 and 4.0 pipes in the dimensions d140-d225

### Note:

Spindle and clamping shoes are to be used of COOL-FIT 2.0/4.0 foam removal and peeling tool 799738003

d (mm)	Code	Weight (kg)
140-225	<b>799 738 013</b>	50.000

## MSA 2.1 Automatic Electrofusion Unit with protocols retrieval



The MSA 2.1 automatic electro fusion unit combines light weight and high efficiency, thanks to its inverter technology and furthermore provides fusion documentation in PDF. The unit is extremely fast and simple, with three basic operations required to operator: connect, scan, start the fusion. It is robust, safe and ergonomic.

All is meant to simplify the job: the barcode scanner, for long distance reading, the cooling system to joint in series, the icon system, to keep the interaction between user and machine intuitive. The entire welding process is controlled and regulated with energy output compensation depending on ambient temperature and the indication of cooling time.

The internal Bluetooth Low Energy device offers the possibility to enter data, monitor the fusion from remote and collect the data recorded via wireless with consumer smartphones, to send them to the headquarter even in real time.

The unit has 1000 protocols permanently stored in the internal memory. The user can copy the fusion reports in an USB stick to print them out in PDF format.

Scope of delivery includes: transport box, angle adapters (4.0 mm and 4.7 mm), operating instructions, START/STOP badge and USB memory stick with PC applications.

### Technical Data:

- Operating temperature: -20°C to +50°C
- Mains voltage and frequency: 230V (190V - 265V), 50-60Hz
- Fusion voltage: 8-42 V (48 V)
- Fusion data input mode: bar code, manual
- Fusion current: 90 A (max)
- Suggested power generators: 3.5 kVA
- USB Port: Type A
- Protection factor: Class 1 / IP 65
- Mains cable: 4 m / Fusion cable: 4 m
- Weight: ca. 11.9 kg
- Display: Graphical LCD, adjustable contrast
- Independent from languages
- Bluetooth radio interface

	Type	Code	Weight (kg)
Barcode scanner, transport case, mini Welding Book		<b>790 156 003</b>	11.900
Barcode scanner, transport case, mini Welding Book, Swiss plug		<b>790 156 006</b>	11.900
Barcode scanner, transport case, mini Welding Book, 8m fusion cable		<b>790 156 010</b>	12.900



### Clamping tool Double, multi size with universal link

- Recommended for the installation of fittings ELGEF Plus and ecoFIT d40 - 200 and d160 - 630mm
- Recommended for the installation of fittings COOL-FIT d32/D75 - d140/D200 and d160/D250 - d450/D630
- The clamping allows installation without tension and avoids movement during fusion and cooling time
- The centrally located adjustable universal link allows installation of electrofusion couplers, elbows and reducers
- Works above, below and alongside the joint
- Adaptor for use with Tee-pieces available (see accessories)

d (mm)	d1 (mm)	Code	Weight (kg)	Description	L (mm)	B (mm)	H (mm)
40	200	<b>799 301 490</b>	4.200	Scope of delivery: 2 x V-block, 2 x Straight bar, 1 x Universal link, Transport bag (600x380x250)	960	290	230
160	630	<b>799 301 496</b>	14.100	Scope of delivery: 2 x V-block, 2 x Straight bar, 1 x Universal link, Transport bag (780x780x580)	1300	670	550



### Clamping tool Quadruple, multi size with universal link

- Recommended for the installation of fittings ELGEF Plus and ecoFIT d40 - 200 and d160 - 630mm
- Recommended for the installation of fittings COOL-FIT d32/D75 - d140/D200 and d160/D250 - d450/D630
- The clamping allows installation without tension and avoids movement during fusion and cooling time
- The centrally located adjustable universal link allows installation of electrofusion couplers, elbows and reducers
- Universal use; works above, below and alongside the joint
- Adaptor for use with Tee-pieces available (see accessories)

d (mm)	d1 (mm)	Code	Weight (kg)	Description	L (mm)	B (mm)	H (mm)
40	200	<b>799 301 489</b>	8.300	Scope of delivery: 4 x V-block, 2 x Straight bar, 1 x Universal link	960	290	230
160	630	<b>799 301 495</b>	23.300	Scope of delivery: 4 x V-block, 2 x Straight bar, 1 x Universal link	1300	670	550



### Tee adaptor

- Suitable for clamping tool (799301489 - 495)

d (mm)	d1 (mm)	Code	Weight (kg)	Description	L (mm)	B (mm)	H (mm)
40	200	<b>799 301 491</b>	0.610	Tee adaptor	600	50	40
160	630	<b>799 301 497</b>	3.500	Tee adaptor	1070	75	60



### V-block

- Suitable for clamping tool (799301489 - 495)

d (mm)	d1 (mm)	Code	Weight (kg)	Description	L (mm)	B (mm)	H (mm)
40	200	<b>799 301 492</b>	1.000	V-block complete	290	230	65
160	630	<b>799 301 498</b>	3.200	V-block complete	660	430	90



### Bar extension

- Suitable for clamping tool (799301489 - 495)

d (mm)	d1 (mm)	Code	Weight (kg)	Description	L (mm)	B (mm)	H (mm)
160	630	<b>799 301 499</b>	1.000	Bar extension	1000	40	40

# COOL-FIT 2.0 Spare parts



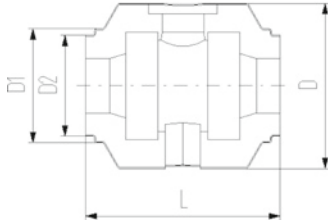
## COOL-FIT 2.0/4.0 Insulation for ball valve type 546 / 542

**Model:**

- Set consisting of half shells and clamps

**Note:**

Suitable for COOL-FIT ball valve only



d (mm)	D (mm)	DN (mm)	Code	Weight (kg)	D1 (mm)	D2 (mm)	L (mm)
32	135	25	<b>738 990 308</b>	0.160	97	82	152
40	157	32	<b>738 990 309</b>	0.228	117	97	170
50	169	40	<b>738 990 310</b>	0.282	117	97	184
63	204	50	<b>738 990 311</b>	0.498	132	117	227
75	235	65	<b>738 990 312</b>	0.935	147	132	276
90	255	80	<b>738 990 313</b>	1.033	168	147	297



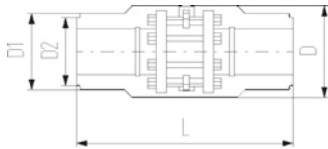
## COOL-FIT 2.0/4.0 Insulation for butterfly valve type 567

**Model:**

- Set consisting of half shells and clamps

**Note:**

Suitable for COOL-FIT butterfly valve only



d (mm)	D (mm)	DN (mm)	Code	Weight (kg)	D1 (mm)	D2 (mm)	L (mm)
110	310	100	<b>738 990 324</b>	2.054	188	168	556
140	287	125	<b>738 990 326</b>	2.947	233	208	662



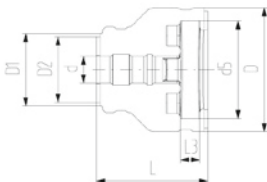
## COOL-FIT 2.0/4.0 Insulation for flange adaptor

**Model:**

- Set consisting of half shells and clamps

**Note:**

Suitable for COOL-FIT flange adaptor only



d (mm)	D (mm)	DN (mm)	Code	Weight (kg)	D1 (mm)	D2 (mm)	L (mm)	L3 (mm)	d5 (mm)
32	135	25	<b>738 990 458</b>	0.226	90	75	162	26	121
40	170	32	<b>738 990 459</b>	0.331	110	90	165	28	146
50	180	40	<b>738 990 460</b>	0.386	110	90	178	30	156
63	200	50	<b>738 990 461</b>	0.533	125	110	230	32	171
75	220	65	<b>738 990 462</b>	0.674	140	125	232	34	191
90	240	80	<b>738 990 463</b>	0.754	160	140	245	35	206
110	270	100	<b>738 990 464</b>	0.889	180	160	254	36	235
140	300	125	<b>738 990 466</b>	1.138	225	200	299	38	256



### COOL-FIT 2.0 Insulation for welding indicator

**Model:**

- Sales unit: Bag with 20 pieces

Code	Weight (kg)
<b>738 010 051</b>	0.055



### Peeling blade d32-d90

- Suitable for COOL-FIT 2.0/4.0 foam removal and peeling tool (799 738 001)

d (mm)	Code	Weight (kg)
32	<b>799 738 101</b>	0.015
40	<b>799 738 102</b>	0.020
50	<b>799 738 103</b>	0.019
63	<b>799 738 104</b>	0.020
75	<b>799 738 105</b>	0.020
90	<b>799 738 106</b>	0.030



### Peeling blade d110-d225

- Suitable for COOL-FIT 2.0/4.0 foam removal and peeling tool (799 738 003)

d (mm)	Code	Weight (kg)
110	<b>799 738 107</b>	0.100
140	<b>799 738 108</b>	0.100
160	<b>799 738 109</b>	0.100
225	<b>799 738 110</b>	0.100



### Replacement blade foam separator

- Suitable for COOL-FIT 2.0/4.0 foam removal and peeling tool (799 738 004) and upgrade kit d140-d225 (799 738 013)

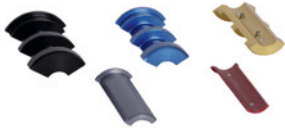
Code	Weight (kg)	Suitable for
<b>799 738 117</b>	0.080	799 738 013



### O-Ring for clamping shoe

- Suitable for COOL-FIT 2.0/4.0 foam removal and peeling tool (799 738 001 and 799 738 003)

d (mm)	Code	Weight (kg)
32	<b>799 738 050</b>	0.003
110	<b>799 738 051</b>	0.010



### Clamping shoe d32-d90

- Suitable for COOL-FIT 2.0/4.0 foam removal and peeling tool (799 738 001)

d (mm)	Code	Weight (kg)	Colour
32	<b>799 738 020</b>	0.240	silver
40	<b>799 738 021</b>	0.090	red
50	<b>799 738 022</b>	0.210	anthracite
63	<b>799 738 023</b>	0.120	gold
75	<b>799 738 024</b>	0.270	blue
90	<b>799 738 025</b>	0.480	black



### Clamping shoe d110-d225

- Suitable for COOL-FIT 2.0/4.0 foam removal and peeling tool (799 738 003)
- Type A: Spindle start
- Type B: With pipe stop

d (mm)	Code	Weight (kg)	Colour	Type
110	<b>799 738 026</b>	0.680	silver	
140	<b>799 738 027</b>	0.480	red	A
140	<b>799 738 037</b>	0.480	red	B
160	<b>799 738 028</b>	0.580	anthracite	A
160	<b>799 738 038</b>	0.580	anthracite	B
225	<b>799 738 029</b>	0.600	gold	A
225	<b>799 738 039</b>	0.600	gold	B



### Circular blade

- Suitable for COOL-FIT 2.0/4.0 foam removal and peeling tool (799 738 001 and 799 738 003)

Code	Weight (kg)
<b>799 738 040</b>	0.008



### Circular blade-Set

- Suitable for COOL-FIT 2.0/4.0 foam removal and peeling tool (799738001 and 799738003)
- Consists of: Circular blade, holder and screw

d (mm)	Code	Weight (kg)
32 - 90	<b>799 738 048</b>	0.025
110 - 225	<b>799 738 049</b>	0.025



### Saw

- Suitable for COOL-FIT 2.0/4.0 foam removal and peeling tool (799 738 003)

d (mm)	Code	Weight (kg)
140 - 225	<b>799 738 060</b>	1.000



### Saw blade

- Suitable for COOL-FIT 2.0/4.0 foam removal and peeling tool (799 738 003)

d (mm)	Code	Weight (kg)
140 - 225	<b>799 738 061</b>	0.029



### Spare blades for deburring tool

- 10 pieces

Code	SP	Weight (kg)
<b>790 205 083</b>	1	0.031









# Worldwide at home

Our sales companies and representatives ensure local customer support in more than 100 countries.

[www.gfps.com](http://www.gfps.com)

## Argentina / Southern South America

Georg Fischer Central Plastics Sudamérica S.R.L.  
Buenos Aires / Argentina  
Phone +54 11 4512 02 90  
gfcentral.ps.ar@georgfischer.com  
www.gfps.com/ar

## Australia

Georg Fischer Pty Ltd  
Riverwood NSW 2210  
Phone +61 (0) 2 9502 8000  
australia.ps@georgfischer.com  
www.gfps.com/au

## Austria

Georg Fischer Rohrleitungssysteme GmbH  
3130 Herzogenburg  
Phone +43 (0) 2782 856 43-0  
austria.ps@georgfischer.com  
www.gfps.com/at

## Belgium / Luxembourg

Georg Fischer NV/SA  
1600 Sint-Pieters-Leeuw / Belgium  
Phone +32 (0) 2 556 40 20  
Fax +32 (0) 2 524 34 26  
be.ps@georgfischer.com  
www.gfps.com/be

## Brazil

Georg Fischer Sist. de Tub. Ltda.  
04571-020 São Paulo/SP  
Phone +55 (0) 11 5525 1311  
br.ps@georgfischer.com  
www.gfps.com/br

## Canada

Georg Fischer Piping Systems Ltd  
Mississauga, ON L5T 2B2  
Phone +1 (905) 670 8005  
Fax +1 (905) 670 8513  
ca.ps@georgfischer.com  
www.gfps.com/ca

## China

Georg Fischer Piping Systems Ltd  
Shanghai 201319  
Phone +86 21 3899 3899  
china.ps@georgfischer.com  
www.gfps.com/cn

## Denmark / Iceland

Georg Fischer A/S  
2630 Taastrup / Denmark  
Phone +45 (0) 70 22 19 75  
info.dk.ps@georgfischer.com  
www.gfps.com/dk

## Finland

Georg Fischer AB  
01510 Vantaa  
Phone +358 (0) 9 586 58 25  
Fax +358 (0) 9 586 58 29  
info.fi.ps@georgfischer.com  
www.gfps.com/fi

## France

Georg Fischer SAS  
95932 Roissy Charles de Gaulle Cedex  
Phone +33 (0) 1 41 84 68 84  
fr.ps@georgfischer.com  
www.gfps.com/fr

## Germany

Georg Fischer GmbH  
73095 Albershausen  
Phone +49 (0) 7161 302 0  
info.de.ps@georgfischer.com  
www.gfps.com/de

## India

Georg Fischer Piping Systems Pvt. Ltd  
400 083 Mumbai  
Phone +91 22 4007 2000  
Fax +91 22 4007 2020  
branchoffice@georgfischer.com  
www.gfps.com/in

## Indonesia

PT Georg Fischer Indonesia  
Karawang 41371, Jawa Barat  
Phone +62 267 432 044  
Fax +62 267 431 857  
indonesia.ps@georgfischer.com  
www.gfps.com/id

## Italy

Georg Fischer S.p.A.  
20864 Agrate Brianza (MB)  
Phone +39 02 921 86 1  
Fax +39 02 921 86 24 7  
it.ps@georgfischer.com  
www.gfps.com/it

## Japan

Georg Fischer Ltd  
530-0003 Osaka  
Phone +81 (0) 6 6341 2451  
jp.ps@georgfischer.com  
www.gfps.com/jp

## Korea

Georg Fischer Korea Co. Ltd  
Unit 2501, U-Tower  
120 Heungdeok Jungang-ro  
(Yeongdeok-dong)  
Giheung-gu, Yongin-si, Gyeonggi-do  
Phone +82 31 8017 1450  
Fax +82 31 217 1454  
kor.ps@georgfischer.com  
www.gfps.com/kr

## Malaysia

Georg Fischer (M) Sdn. Bhd.  
41200 Klang, Selangor Darul Ehsan  
Phone +60 (0) 3 3122 5585  
Fax +60 (0) 3 3122 5575  
my.ps@georgfischer.com  
www.gfps.com/my

## Mexico / Northern Latin America

Georg Fischer S.A. de C.V.  
CP 66603 Apodaca, Nuevo León / Mexico  
Phone +52 (81) 1340 8586  
Fax +52 (81) 1522 8906  
mx.ps@georgfischer.com  
www.gfps.com/mx

## Middle East

Georg Fischer Piping Systems (Switzerland) Ltd  
Dubai / United Arab Emirates  
Phone +971 4 289 49 60  
gcc.ps@georgfischer.com  
www.gfps.com/int

## Netherlands

Georg Fischer N.V.  
8161 PA Epe  
Phone +31 (0) 578 678 222  
nl.ps@georgfischer.com  
www.gfps.com/nl

## New Zealand

Georg Fischer Ltd  
5018 Upper Hutt  
Phone +04 527 9813  
Fax +04 527 9834  
nz.ps@georgfischer.com  
www.gfps.com/nz

## Norway

Georg Fischer AS  
1351 Rud  
Phone +47 67 18 29 00  
no.ps@georgfischer.com  
www.gfps.com/no

## Philippines

George Fischer Pte. Ltd.  
Philippines Representative Office  
1500 San Juan City  
Phone +632 571 2365  
Fax +632 571 2368  
sgp.ps@georgfischer.com  
www.gfps.com/sg

## Poland

Georg Fischer Sp. z o.o.  
05-090 Sekocin Nowy  
Phone +48 (0) 22 31 31 0 50  
poland.ps@georgfischer.com  
www.gfps.com/pl

## Romania

Georg Fischer Piping Systems (Switzerland) Ltd  
020257 Bucharest - Sector 2  
Phone +40 (0) 21 230 53 80  
ro.ps@georgfischer.com  
www.gfps.com/int

## Russia

Georg Fischer Piping Systems (Switzerland) Ltd  
Moscow 125040  
Phone +7 495 748 11 44  
ru.ps@georgfischer.com  
www.gfps.com/ru

## Singapore

Georg Fischer Pte Ltd  
528 872 Singapore  
Phone +65 6747 0611  
Fax +65 6747 0577  
sgp.ps@georgfischer.com  
www.gfps.com/sg

## Spain / Portugal

Georg Fischer S.A.  
28046 Madrid / Spain  
Phone +34 (0) 91 781 98 90  
es.ps@georgfischer.com  
www.gfps.com/es

## Sweden

Georg Fischer AB  
117 43 Stockholm  
Phone +46 (0) 8 506 775 00  
info.se.ps@georgfischer.com  
www.gfps.com/se

## Switzerland

Georg Fischer Rohrleitungssysteme (Schweiz) AG  
8201 Schaffhausen  
Phone +41 (0) 52 631 3026  
ch.ps@georgfischer.com  
www.gfps.com/ch

## Taiwan

Georg Fischer Co. Ltd  
San Chung Dist., New Taipei City  
Phone +886 2 8512 2822  
Fax +886 2 8512 2823  
www.gfps.com/tw

## United Kingdom / Ireland

George Fischer Sales Limited  
Coventry, CV2 2ST / United Kingdom  
Phone +44 (0) 2476 535 535  
uk.ps@georgfischer.com  
www.gfps.com/uk

## USA / Caribbean

Georg Fischer LLC  
92618 Irvine, CA / USA  
Phone +1 714 731 8800  
Fax +1 714 731 6201  
us.ps@georgfischer.com  
www.gfps.com/us

## Vietnam

George Fischer Pte Ltd  
Representative Office  
Ho Chi Minh City  
Phone +84 28 3948 4000  
Fax +84 28 3948 4010  
sgp.ps@georgfischer.com  
www.gfps.com/vn

## International

Georg Fischer Piping Systems (Switzerland) Ltd  
8201 Schaffhausen / Switzerland  
Phone +41 (0) 52 631 3003  
Fax +41 (0) 52 631 2893  
info.export@georgfischer.com  
www.gfps.com/int

The information and technical data (altogether "Data") herein are not binding, unless explicitly confirmed in writing. The Data neither constitutes any expressed, implied or warranted characteristics, nor guaranteed properties or a guaranteed durability. All Data is subject to modification. The General Terms and Conditions of Sale of Georg Fischer Piping Systems apply.

